

WHITEHAUS

C O N D O M I N I U M S

**David Vu & Brigitte Obregon
Brokers**

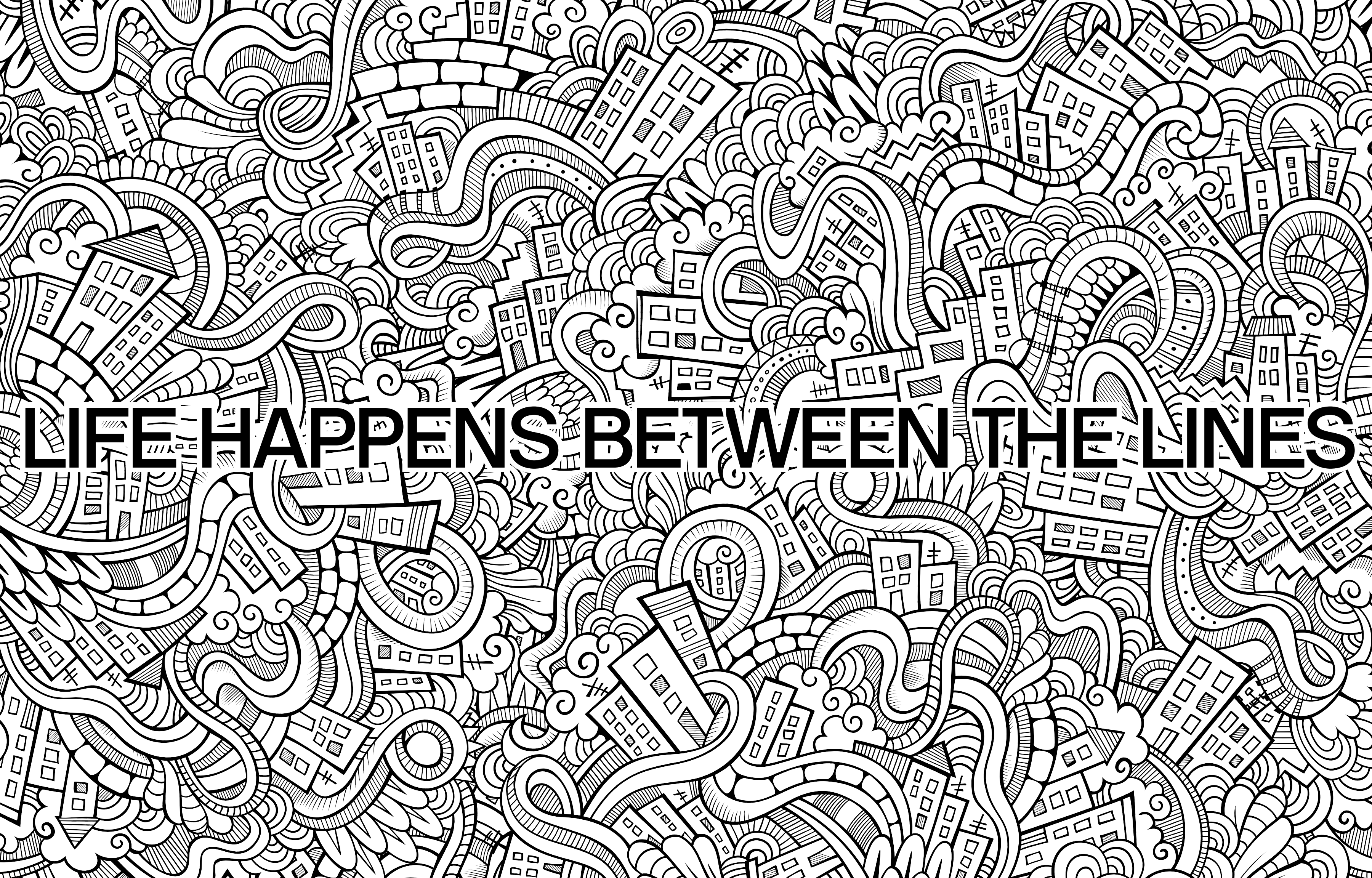
RE/MAX Ultimate Realty Inc., Brokerage

Cell: 416-258-8493 Cell: 416-371-3116

Fax: 416-352-7710

Email: info@gta-homes.com

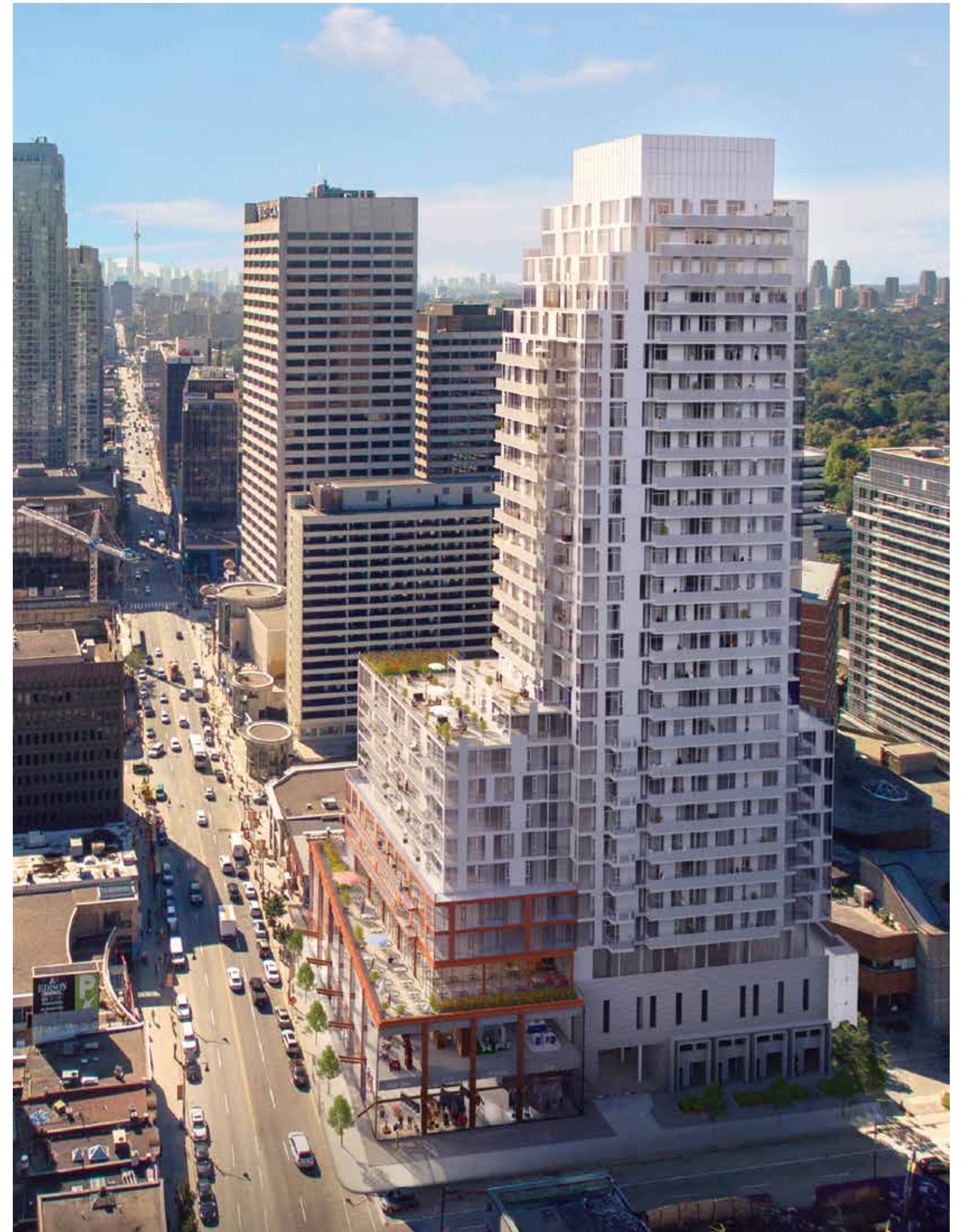
WWW.GTA-HOMES.COM



LIFE HAPPENS BETWEEN THE LINES

Colourful living has arrived on Yonge at Eglinton

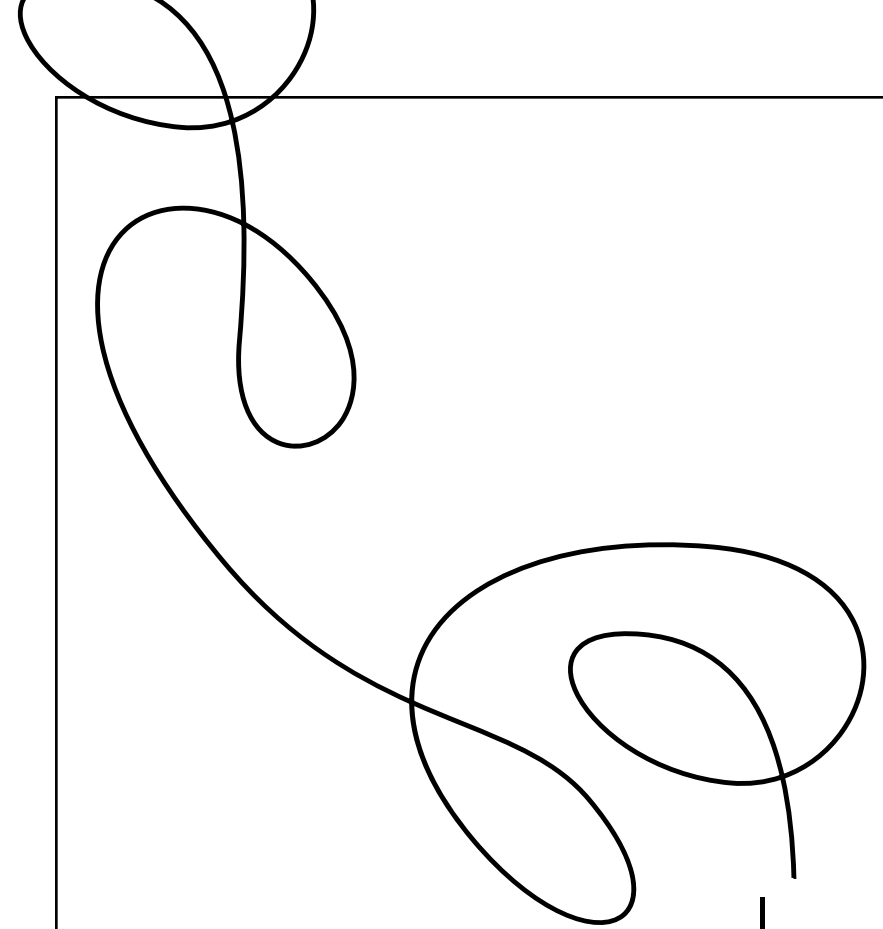
You zig while others zag. Intuitively, unblend. And tend to fill in the blanks 180° from the expected. Where you live should echo that. Inspire your creative streak. And allow you to colour life however you see fit. You need a stellar midtown location. Amenity areas designed with you in mind and the flexibility to be used as you see fit. And living spaces designed for living of the most vibrant kind. Welcome to the Whitehaus. Inspired, imaginative living has a new address.



All illustrations are artist's concept. E. & O.E. Concepts subject to change without notice.

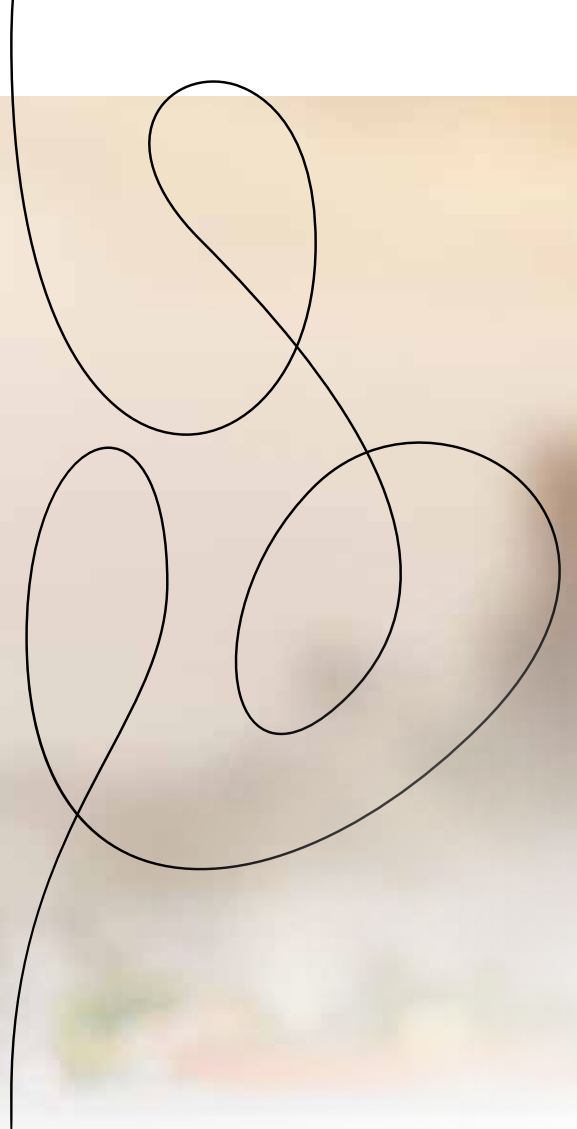


All illustrations are artist's concept. E. & O.E. Concepts subject to change without notice.

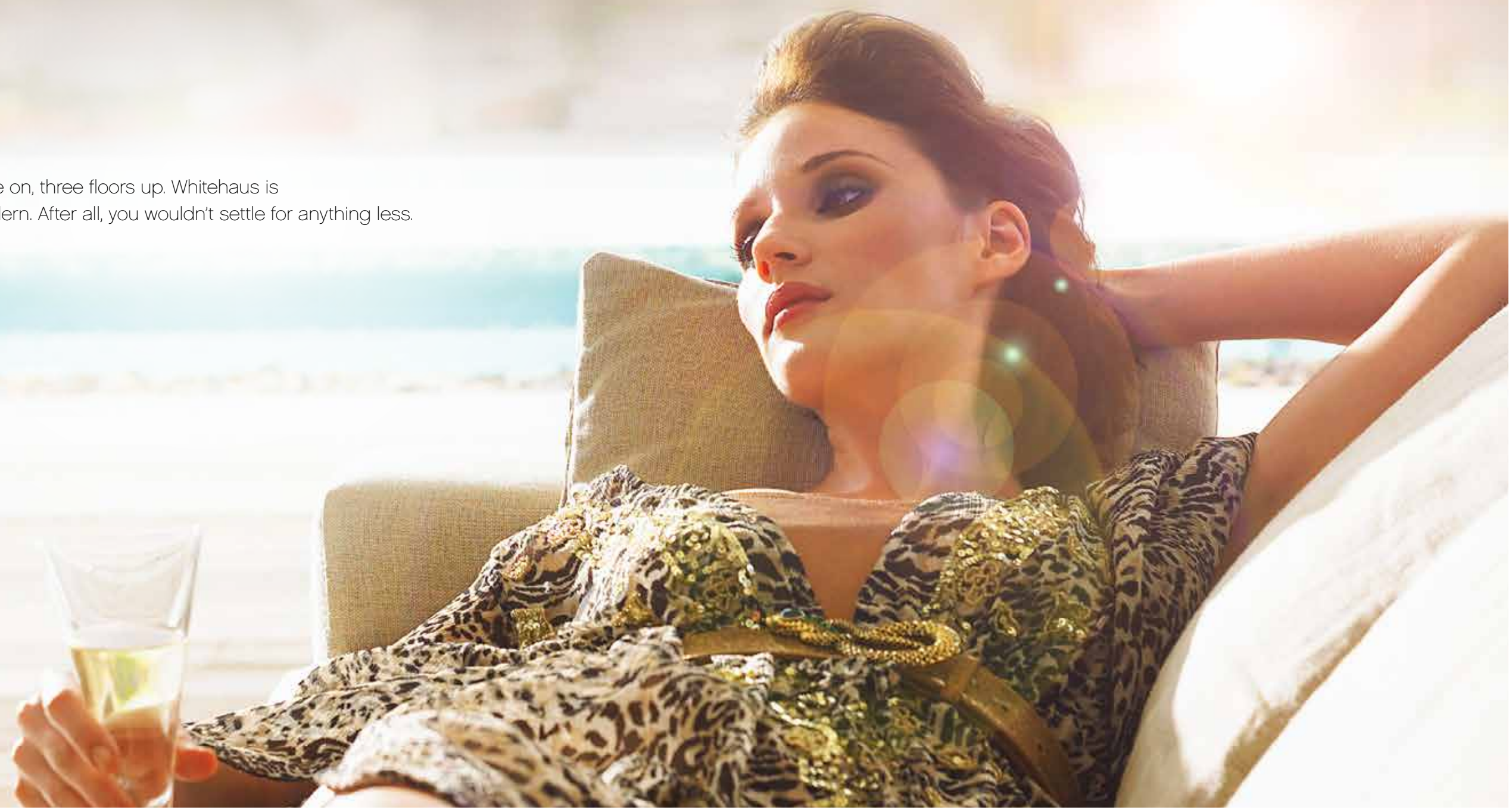


An artful interpretation **of uber modern design**

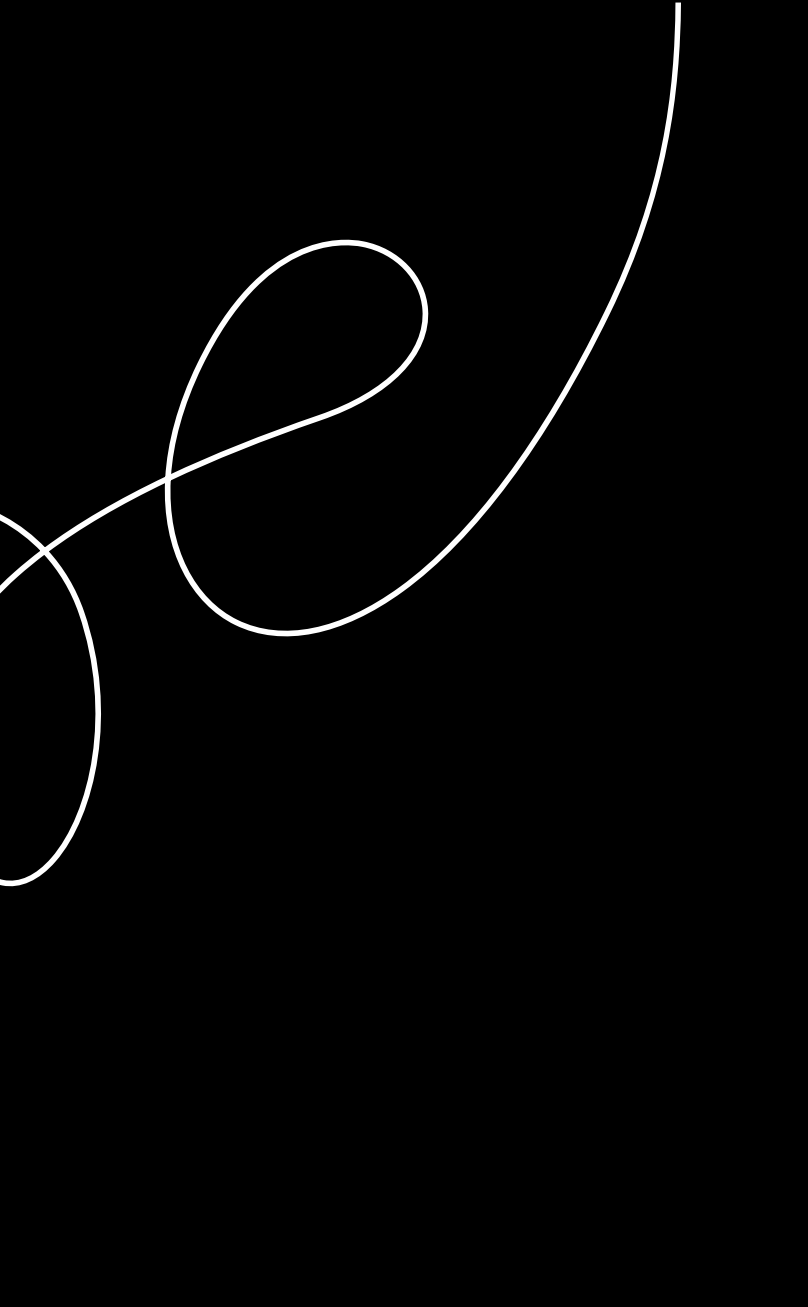
Geometric meets electric in a stunning white statement high above Midtown. Witness 29 storeys soaring above a 3 storey podium lined with stylish street level boutiques, private entrance off Helendale Avenue, and heated parking beneath your feet.



There's even a eco-friendly terrace to lounge on, three floors up. Whitehaus is unapologetically different, unabashedly modern. After all, you wouldn't settle for anything less.



your
canvas
awaits
how will you
colour it?



do

sip

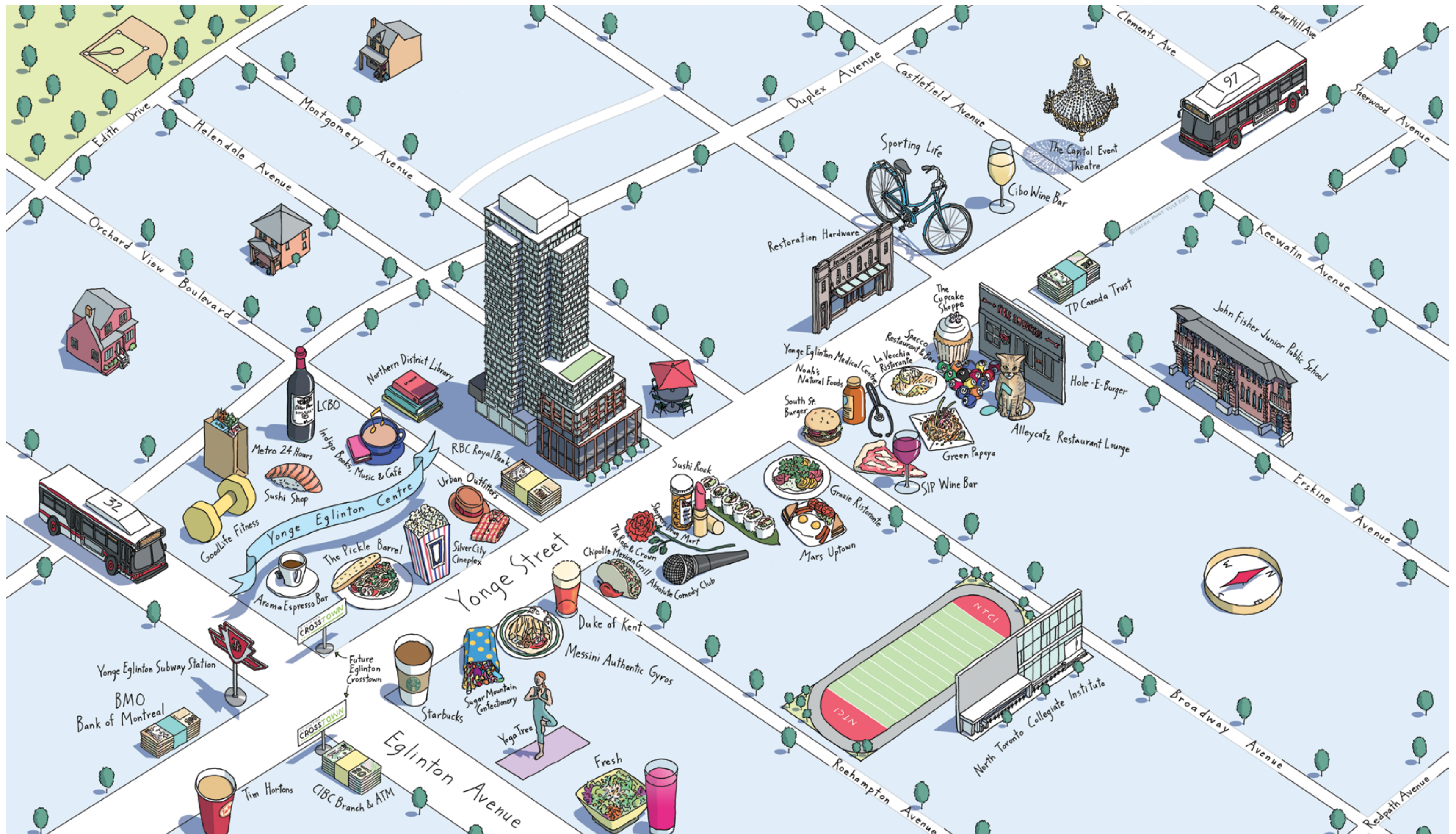
indulge

shop

love

live

paint the midtown **red**





let 50 shades
of green
surround you



sherwood **park**

Got a four-legged buddy? Head to this wooded park's huge off-leash area. Enter on Sherwood St, east of Mount Pleasant to access great walking and hiking trails, picnic tables and even two wading pools/playground catering to the wee set.

eglinton **park**

How much fun can 9 hectares hold? Think 5 multi purpose fields, 4 tennis courts, 2 ball diamonds, a playground, and 2 artificial ice rinks, come winter. Enough said.

st. clements-yonge **parkette**

Need a spot to sit and sip your latte, or just want to watch the action on Yonge St. roll by? The benches in this quaint, garden-lined green space have your name written all over them.

blythwood **ravine park**

Bordered by Alexander Muir Gardens to the west and Sherwood Park to the east, this forested ravine is actually part of the Gardens Discovery Walk. Grab a two or four-legged friend and follow the trail right into Sherwood Park.

alexander muir **memorial gardens**

For photo-ops galore, just follow the wedding parties who flock to these gorgeous floral-infused gardens. Walking trails are open year-round and lead all the way to Sunnybrook Park. Just refrain from the urge to photo bomb any wedding portraits along the way.



White is **brilliant**

The perfect accessory for a stunning, light-infused granite and glass clad Lobby. An attentive 24/7 Concierge to sign for deliveries, flag cabs, greet your guests, or do just about anything else you need to live brilliantly.



All illustrations are artist's concept. E. & O.E. Concepts subject to change without notice.



live in
technicolour



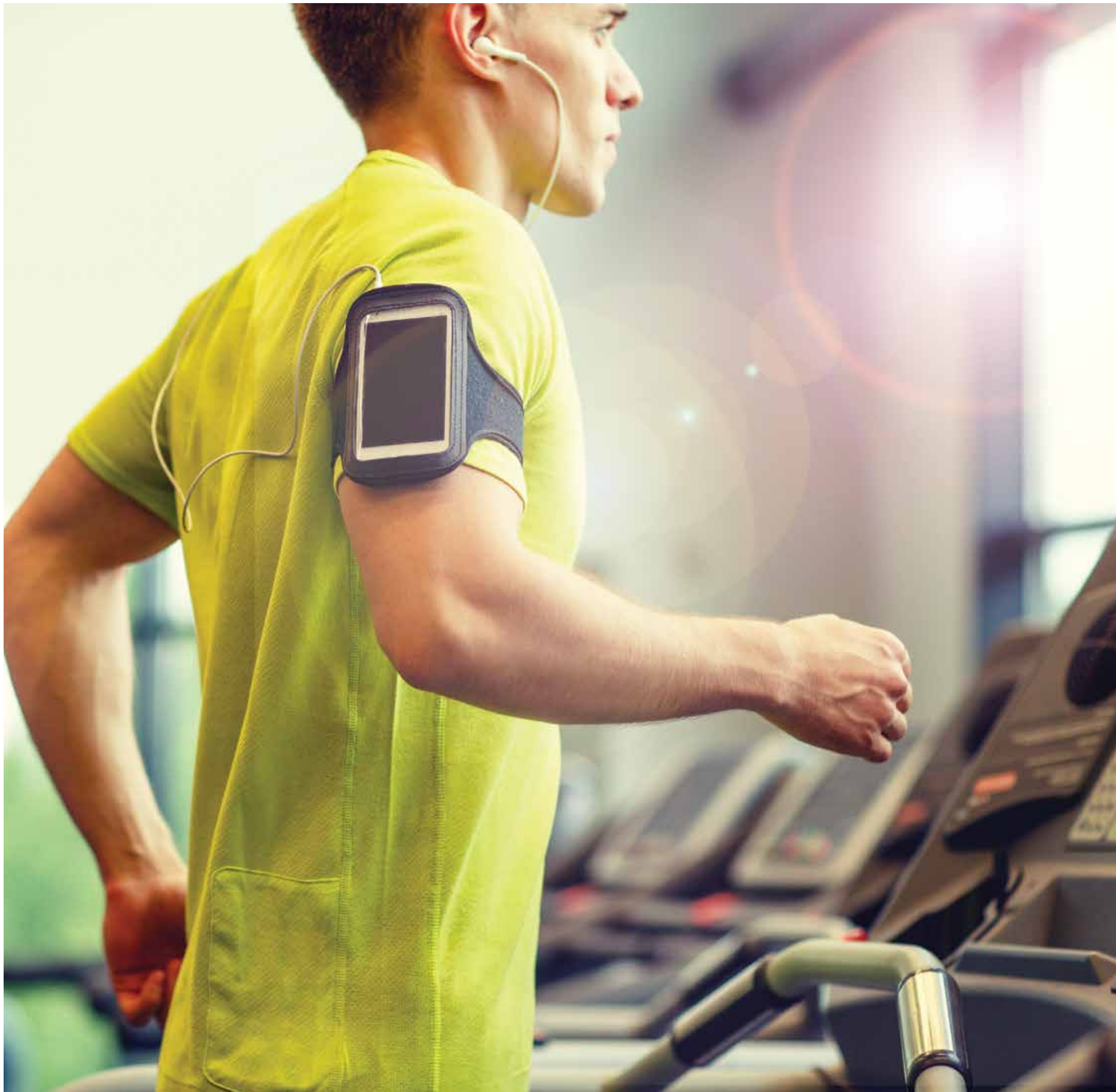
channel your **inner artist**

Channel your inner artist or just hang out in the Flex Space and feel artsy by sheer osmosis. This bright open Artist studio is ideal for painters, weavers, photographers, potters to set up and create around the clock.



pick up a paddle

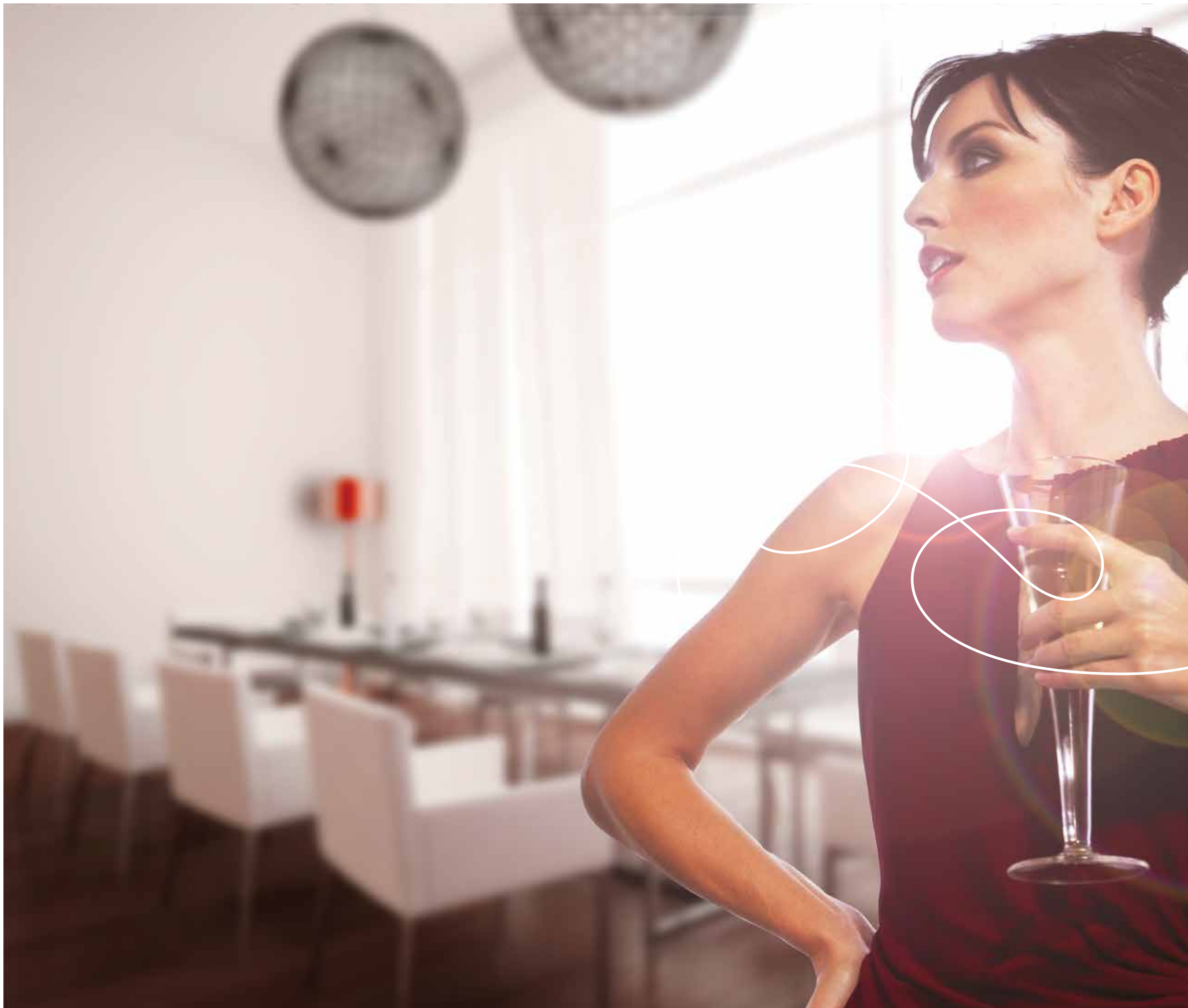
Pick up a paddle and get a game going on one of the ping pong tables in the games room. Heck, call it a cardio. We'll never tell.



happines comes **in all colours**

Kiss the dog groomer goodbye because Whitehaus comes equipped with specially designed dog wash bays to help keep your pooch perfectly coiffed – at least until the next mud puddle.





live vibrantly above all else

Beyond the articulated geometric exterior, sleekly designed 1 and 2 bedrooms suites offer light-filled open concept living spaces beneath 9 foot ceilings. White and black palettes set the tone, while awaiting your personal pops of colour. Streamlined cabinetry and fixtures emit a stunning European vibe. And spacious glass balconies serve up views of the world's longest street. This is your canvas. How will you decide to fill it?

All illustrations are artist's concept. E. & O.E. Concepts subject to change without notice.



Design-Infused Suites:

- Soaring 9'ceiling heights (exclusive of bulkheads)
- Floor-to-ceiling windows provide stunning, unobstructed city views, as per plan
- Choice of designer-selected engineered laminate flooring in all principal rooms and bedrooms
- Smooth finished ceilings
- Solid entry doors with security view-hole
- Contemporary painted baseboards, doorframes and casings
- Designer-selected, polished nickel door handles and hardware
- Insulated double-glazed windows
- Spacious balconies, as per plan
- Parking and storage lockers available, as per plan

Eurostyle Kitchens:

- Sleek, kitchen cabinetry, custom-designed by Cecconi Simone
- Choice of black or white quartz countertops
- Choice of black or white ceramic tile backsplash
- Stainless steel under mount sink with single lever chrome faucet
- Designer-selected ceiling light fixture
- State-of-the-art stainless steel stove and microwave oven with exhaust fan and fully paneled fridge and dishwasher

Bathroom:

- Modern bathroom cabinetry, custom-designed by Cecconi Simone
- Choice of Quartz countertops
- Choice of porcelain flooring
- Choice of porcelain tile tub surround, as per plan (flooring and tub surround are the same)
- Wall-mounted vanity mirror and decorative light fixture
- White soaker tub with chrome faucets, as per plan
- Glass shower stall with chrome fixtures, as per plan
- Pressure balanced chrome faucet and shower fixtures
- Chrome accessory package where applicable

Whitehaus Convenient Laundry

- In-suite laundry closet with white, stacked washer and dryer, as per plan
- Durable porcelain tile flooring in the laundry closet

Whitehaus Tech Features

- Individual thermostat for suite temperature control
- Emergency voice communications system, smoke and carbon monoxide detector, where applicable
- Pre-wiring for cable TV, high-speed Internet access and telephones, as per plan
- Card and key access throughout all common areas
- All main entrances and exits securely monitored with closed circuit television system
- Cameras strategically located in public areas including parking garage
- Enterphone in lobby entrance vestibule
- Remote control/access card for private garage entry

All selections from builder's standard samples



All illustrations are artist's concept. E. & O.E. Concepts subject to change without notice.



the partners

LIFETIME DEVELOPMENTS

For over three decades, Lifetime Developments has had the foresight to know which land to develop, the vision to select neighbourhoods across the Greater Toronto Area that are poised to thrive, and the residential and commercial expertise to create places you want to live, work and dream in. From conception to completion, Lifetime continues to set new benchmarks for design innovation, architectural excellence and customer satisfaction.

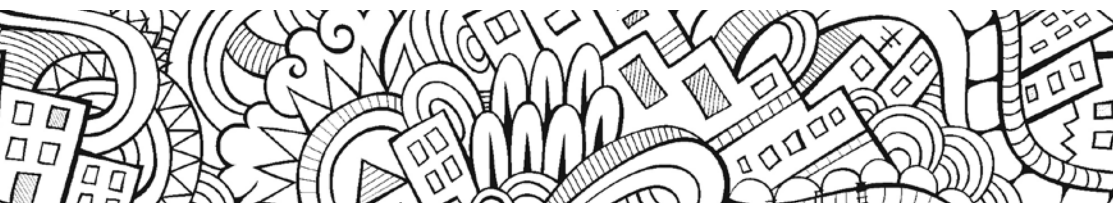
Today, Lifetime is responsible for some of the city's most notable residences including Bisha Hotel and Residences, Four Season Hotel and Private Residences Toronto, INDX Condos, The Code Condominiums, Karma Condos, The Bond, The Yorkville, WaterParkCity, Lumiere Condos, Liberty Market Lofts, Victory Condos, M5V Condominiums and now, Whitehaus.

KNIGHTSTONE CAPITAL MANAGEMENT INC.

Knightstone Capital Management is a privately owned boutique real estate development, investment and asset management company based in Toronto. Since 2002, they have been bringing our passion and expertise to specialty projects such as boutique condominiums, state-of-the-art student residences and over one million square feet of retail property. When it comes to building condos, they always keep you, our customer, top-of-mind. Our extensive research helps them understand everything you want, and need, to be happy in your home. Livability comes first, which means spacious interiors, intuitive functionality, plus generous outdoor space. From front door to faucets, they perfect even the smallest of details, and partner with the best architects, contractors and interior designers to help us realize our vision of unique, customized living experiences. It's how they create homes people want to live in.

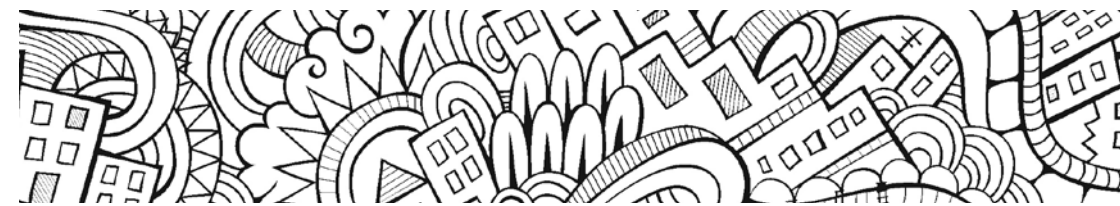


the floorplans



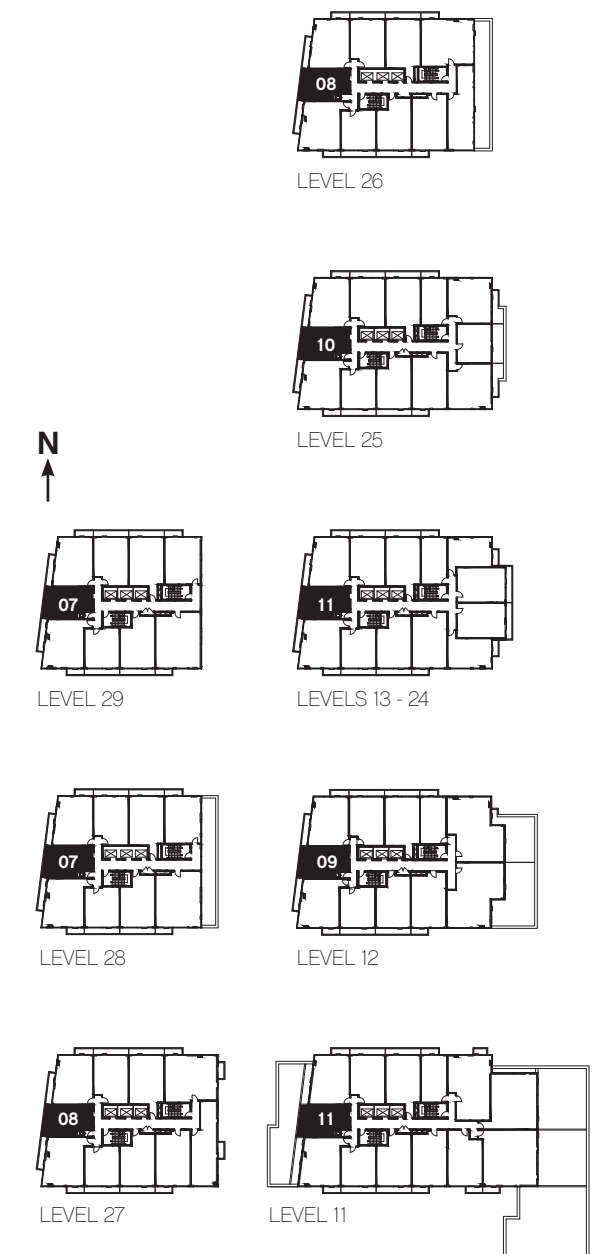
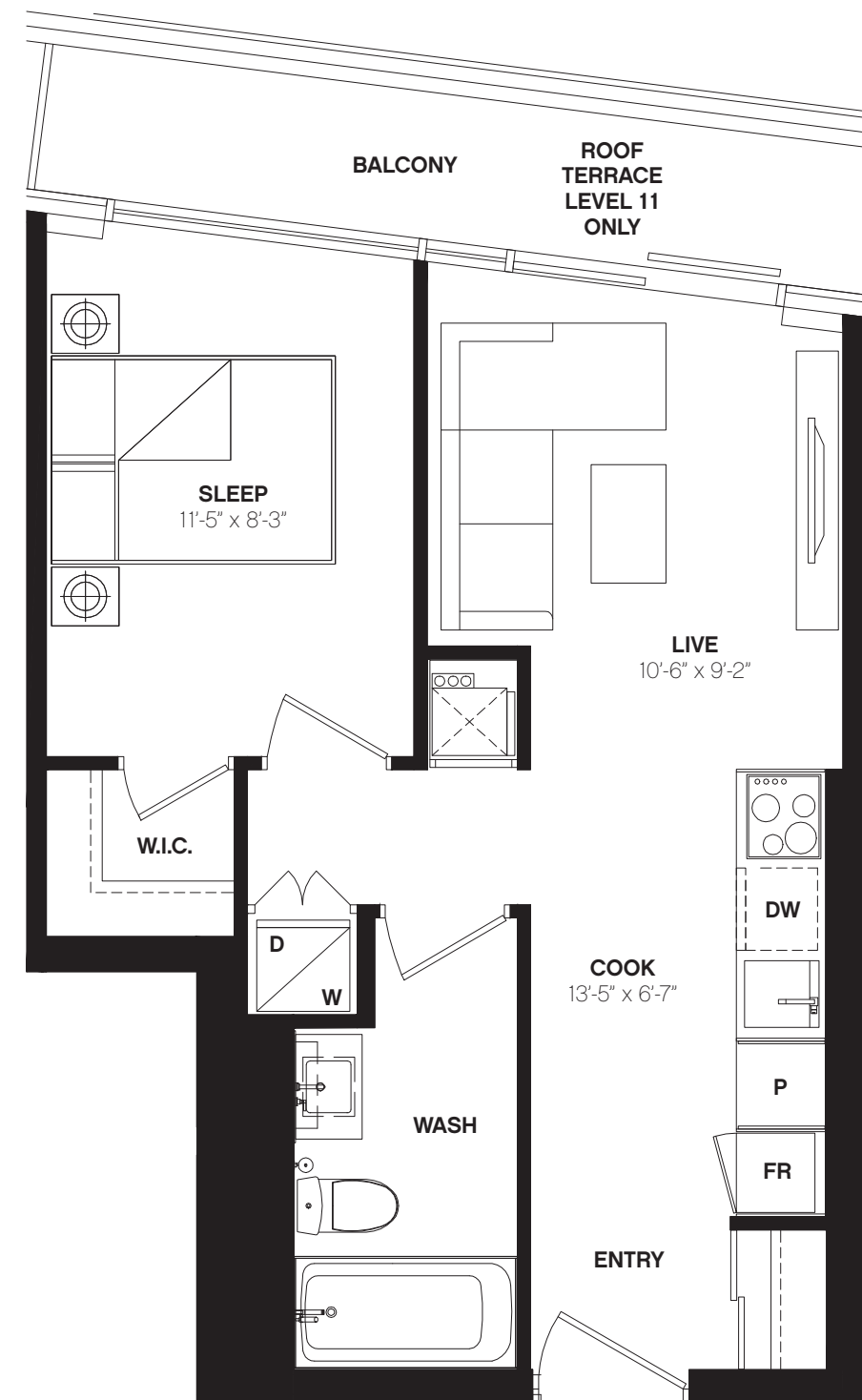
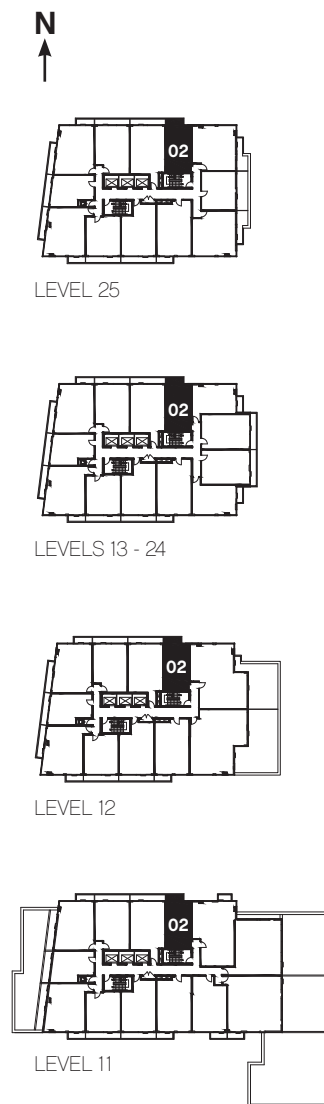
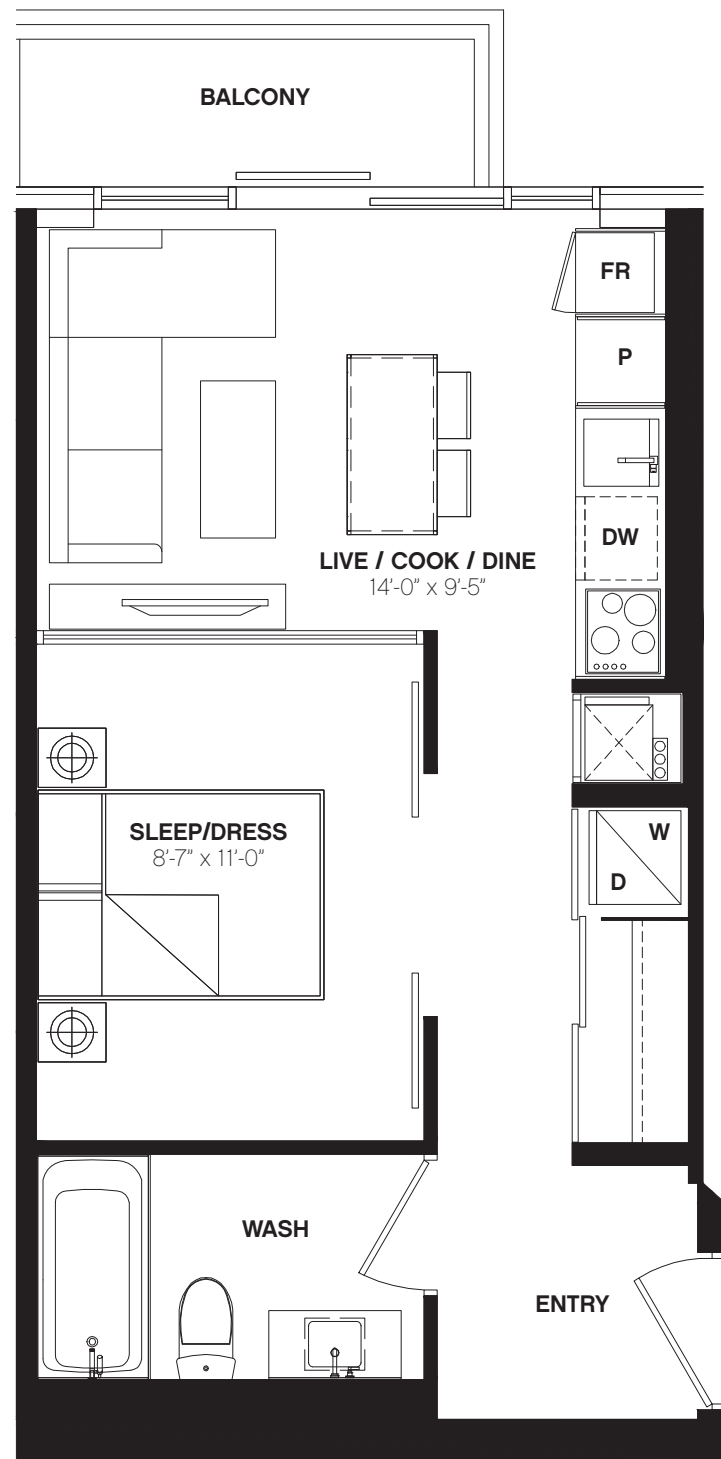
W435

1 BED / 435 SQ. FT.



W449

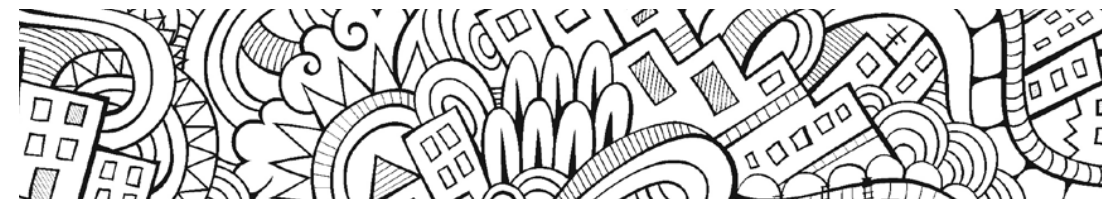
1 BED / 449 SQ. FT.





W488A

1 BED / 488 SQ. FT.

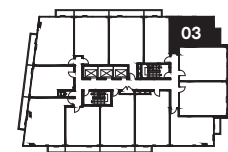


W488B

1 BED / 488 SQ. FT.



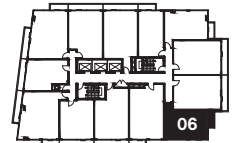
N



LEVELS 13 - 24



N



LEVELS 13 - 24



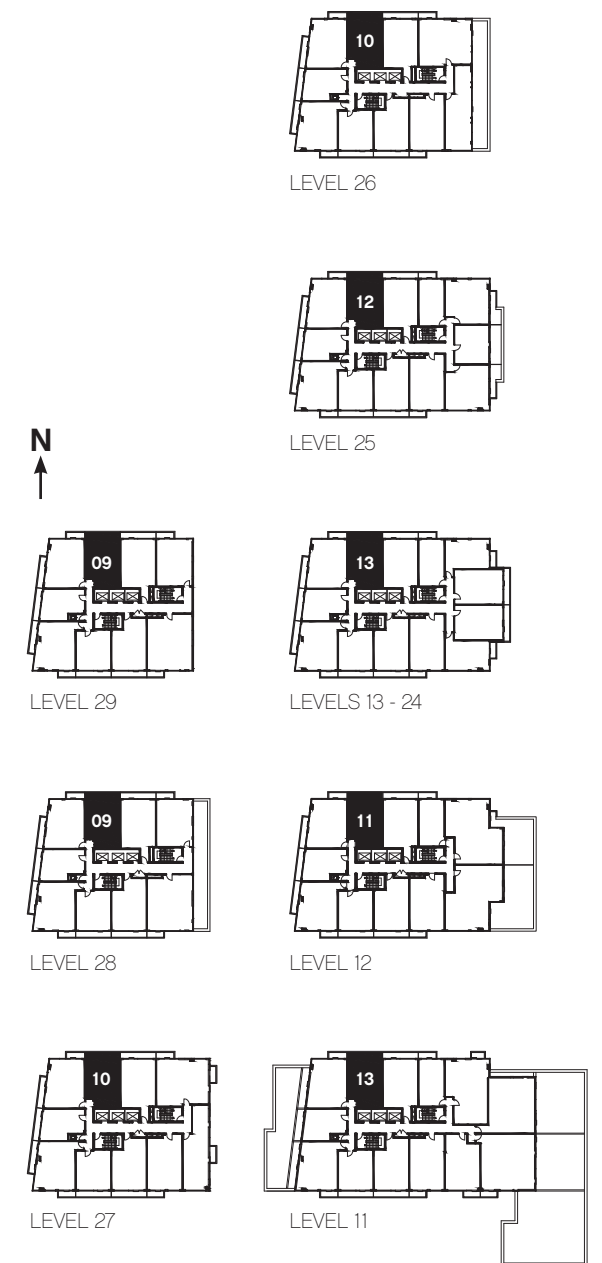
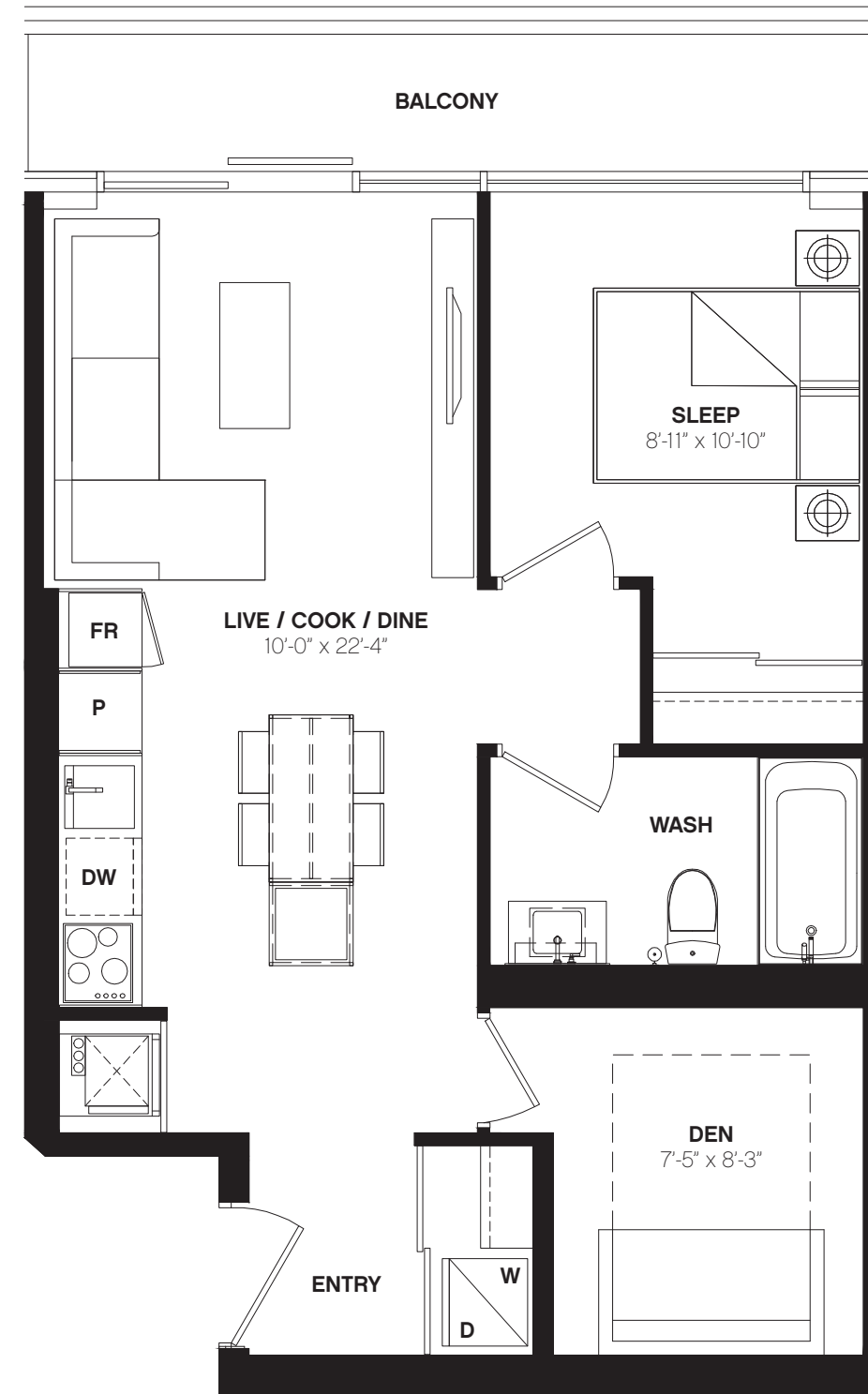
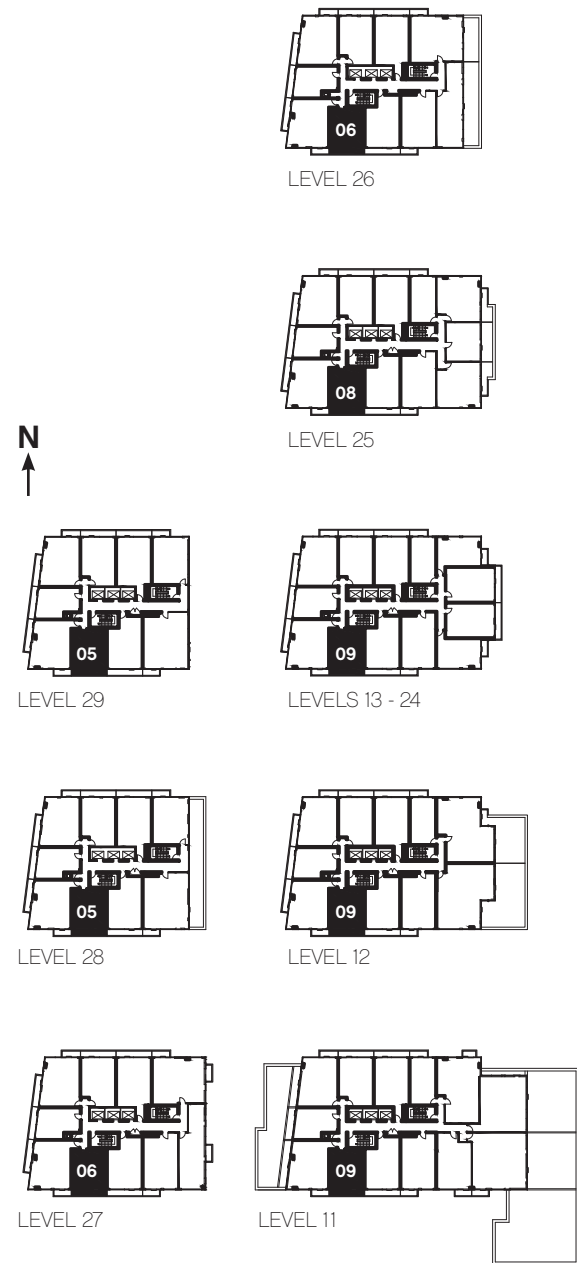
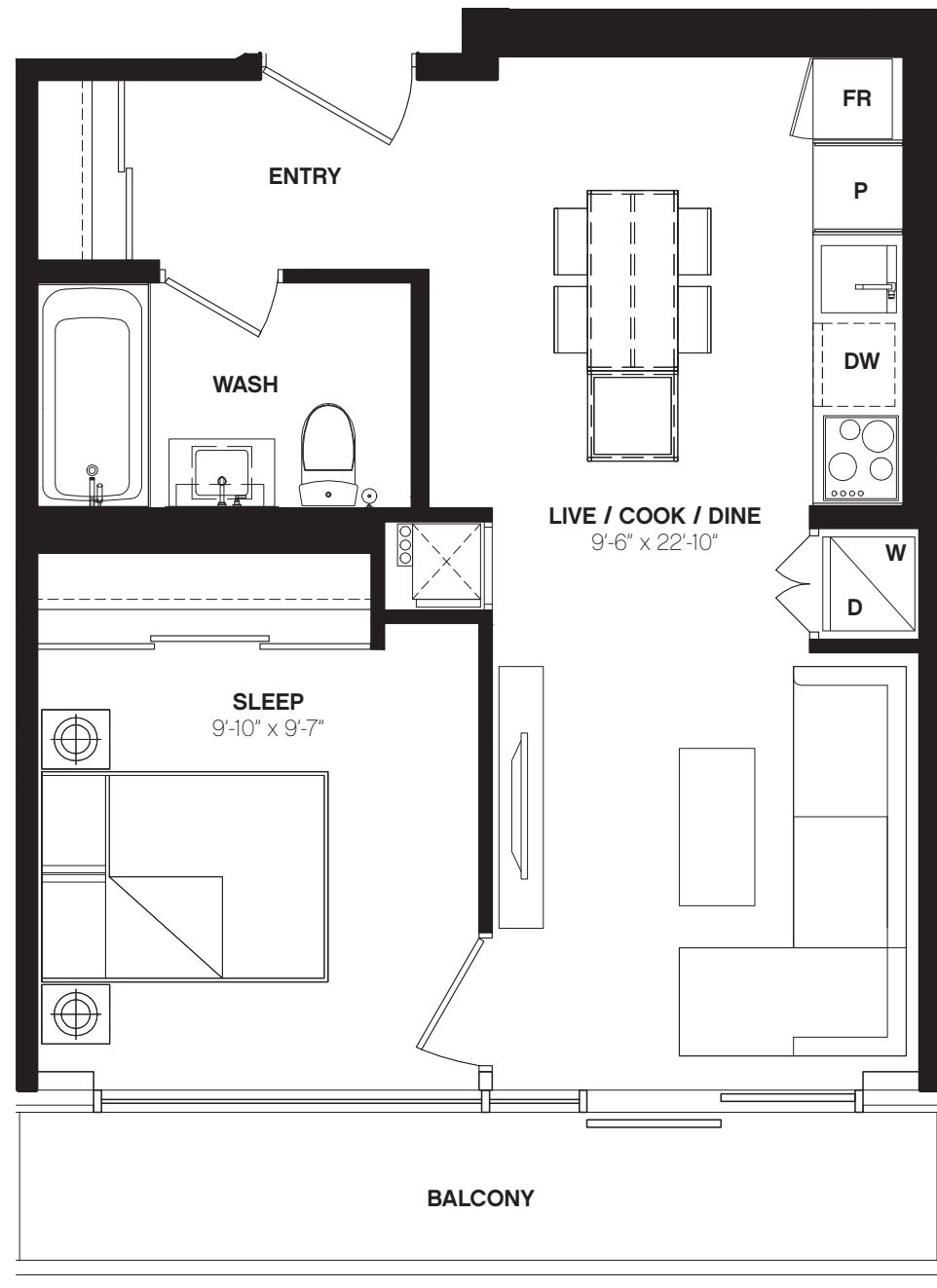
W491

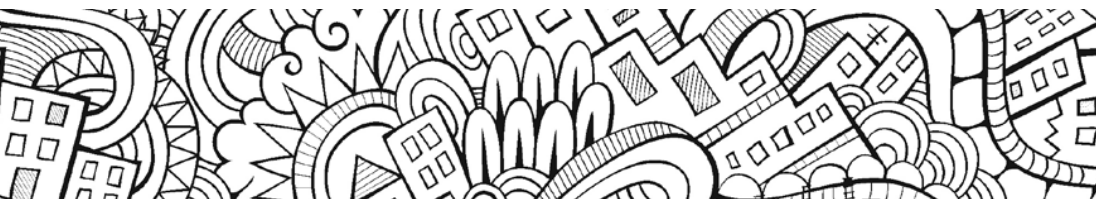
1 BED / 491 SQ. FT.



W573

1 BED + DEN / 573 SQ. FT.





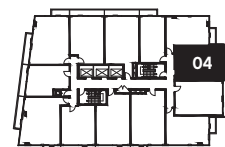
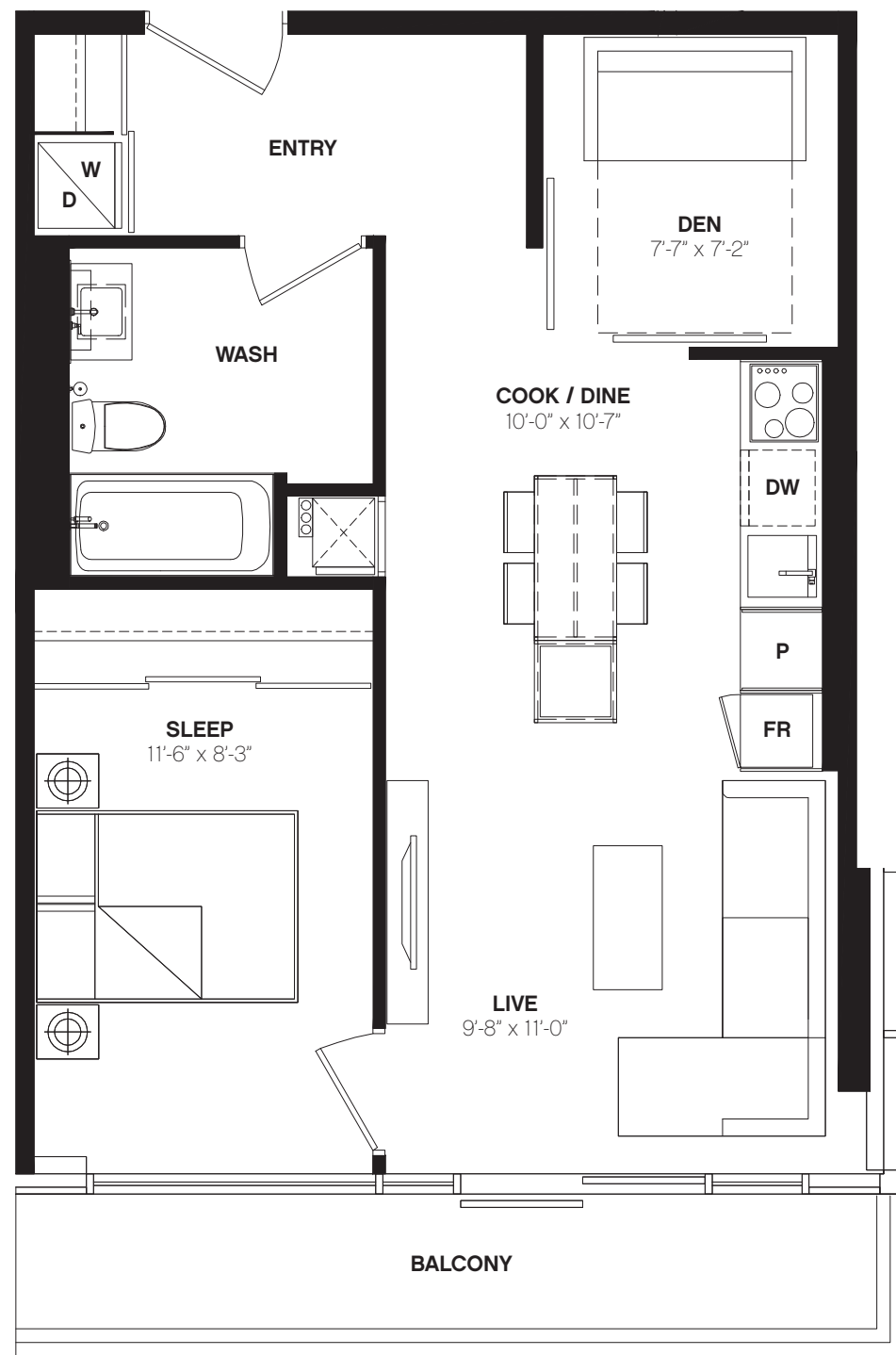
W597A

1 BED + DEN / 597 SQ. FT.

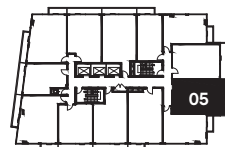
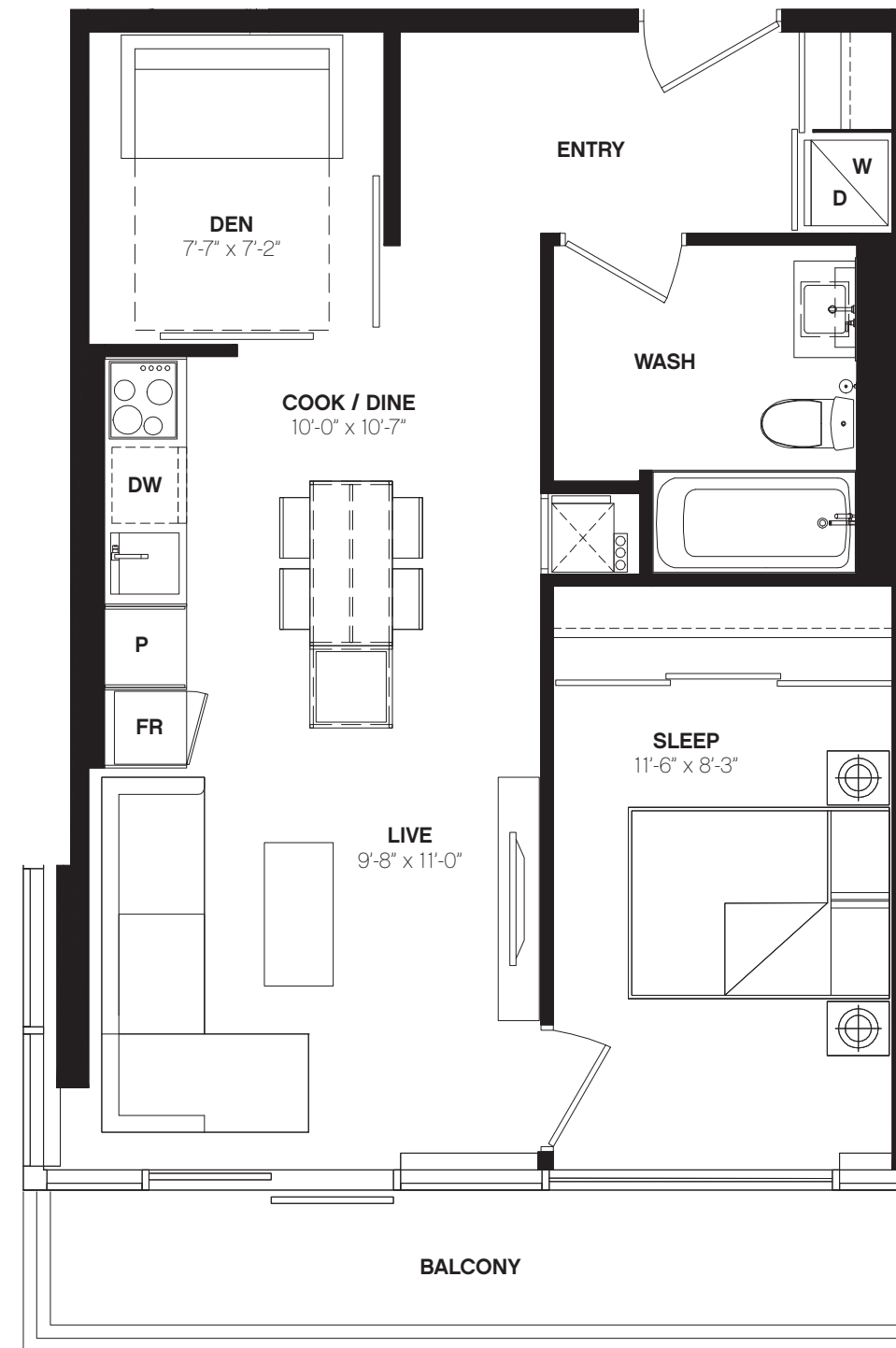


W597B

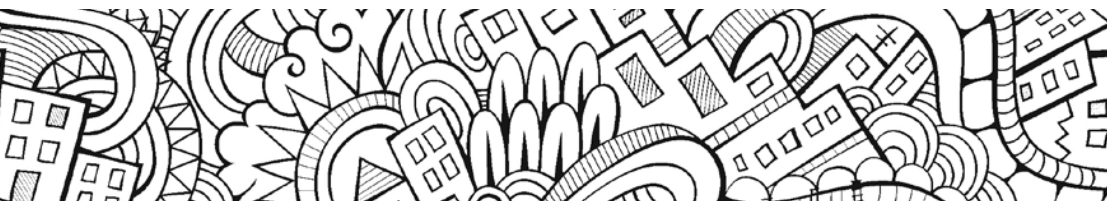
1 BED + DEN / 597 SQ. FT.



LEVELS 13 - 24



LEVELS 13 - 24



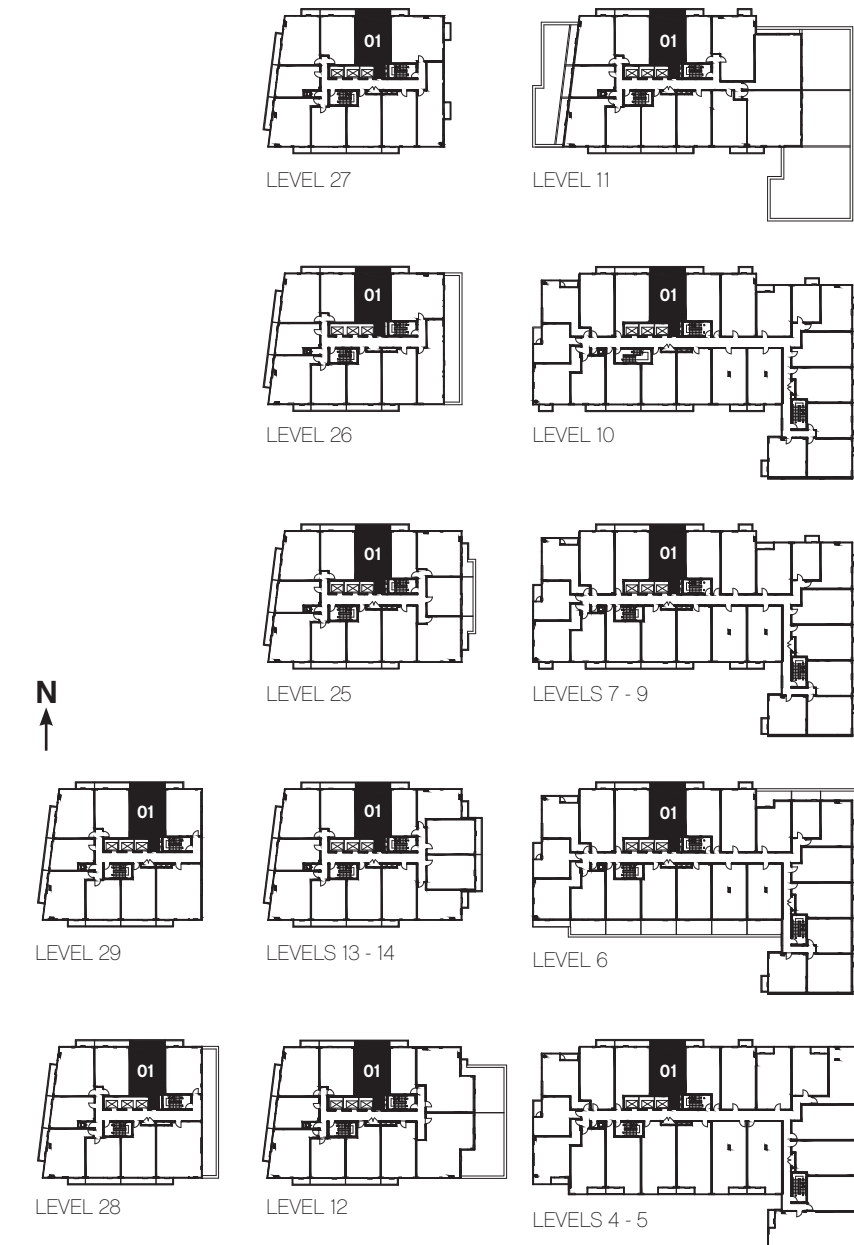
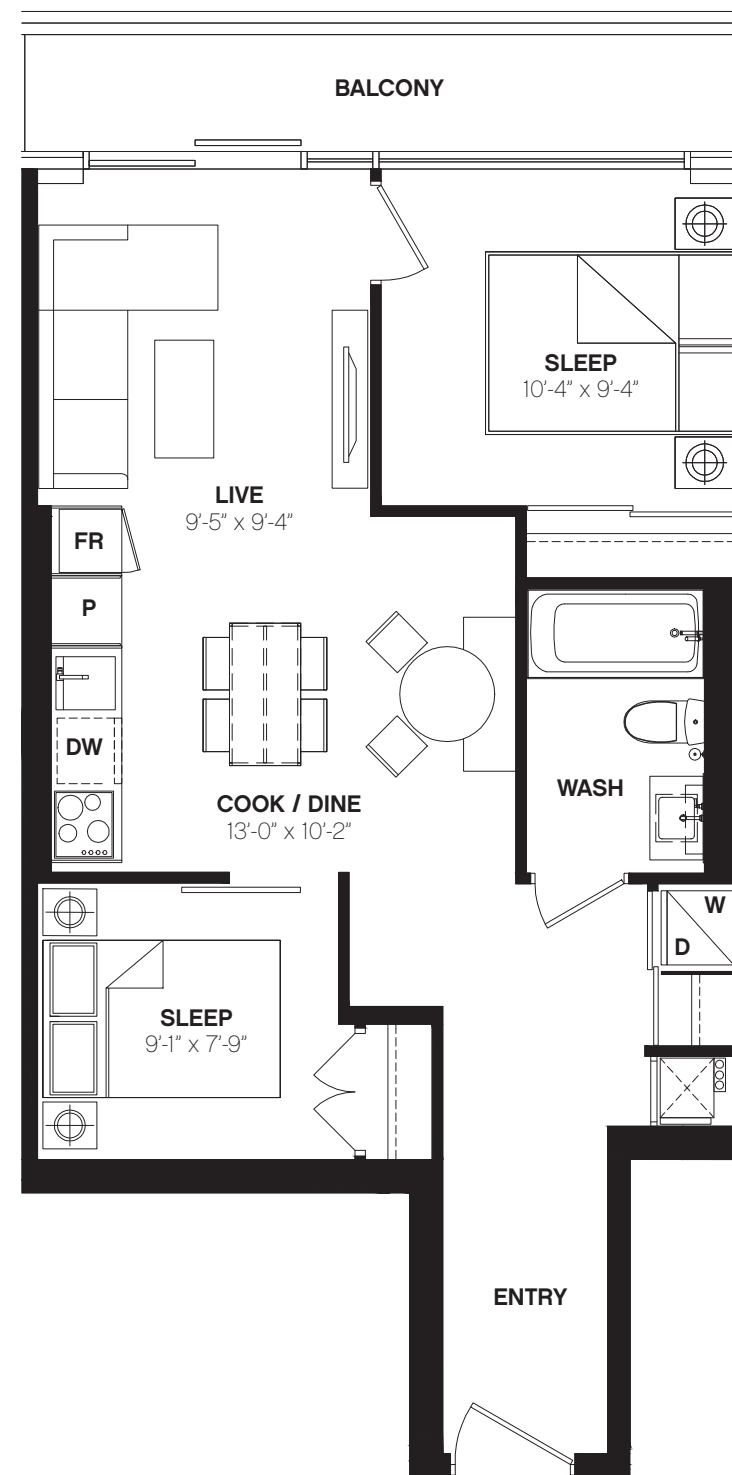
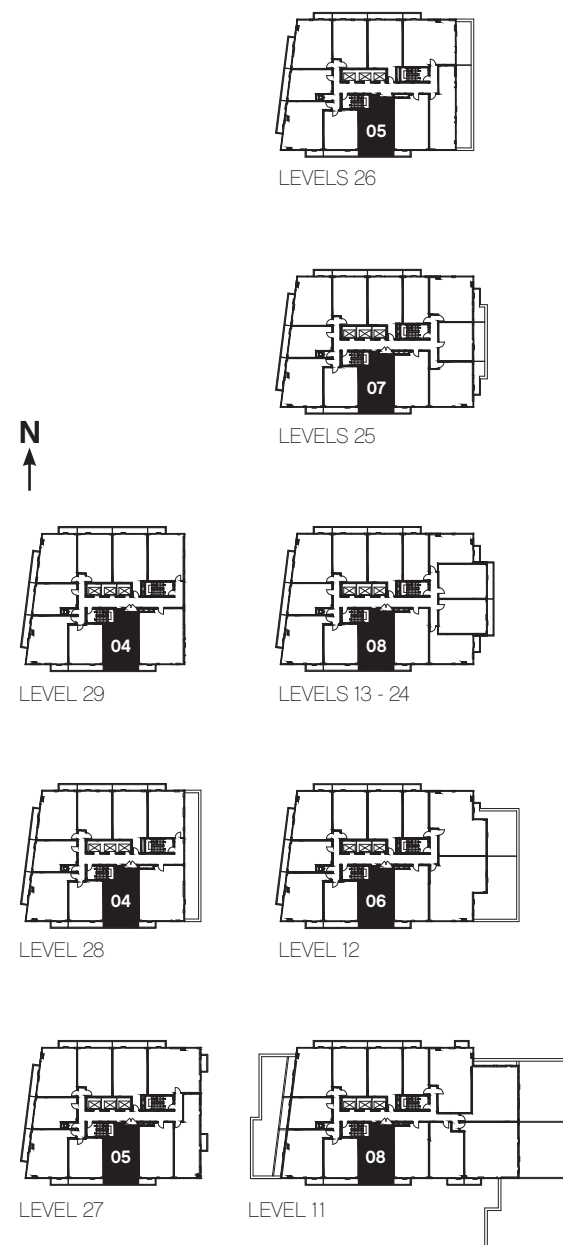
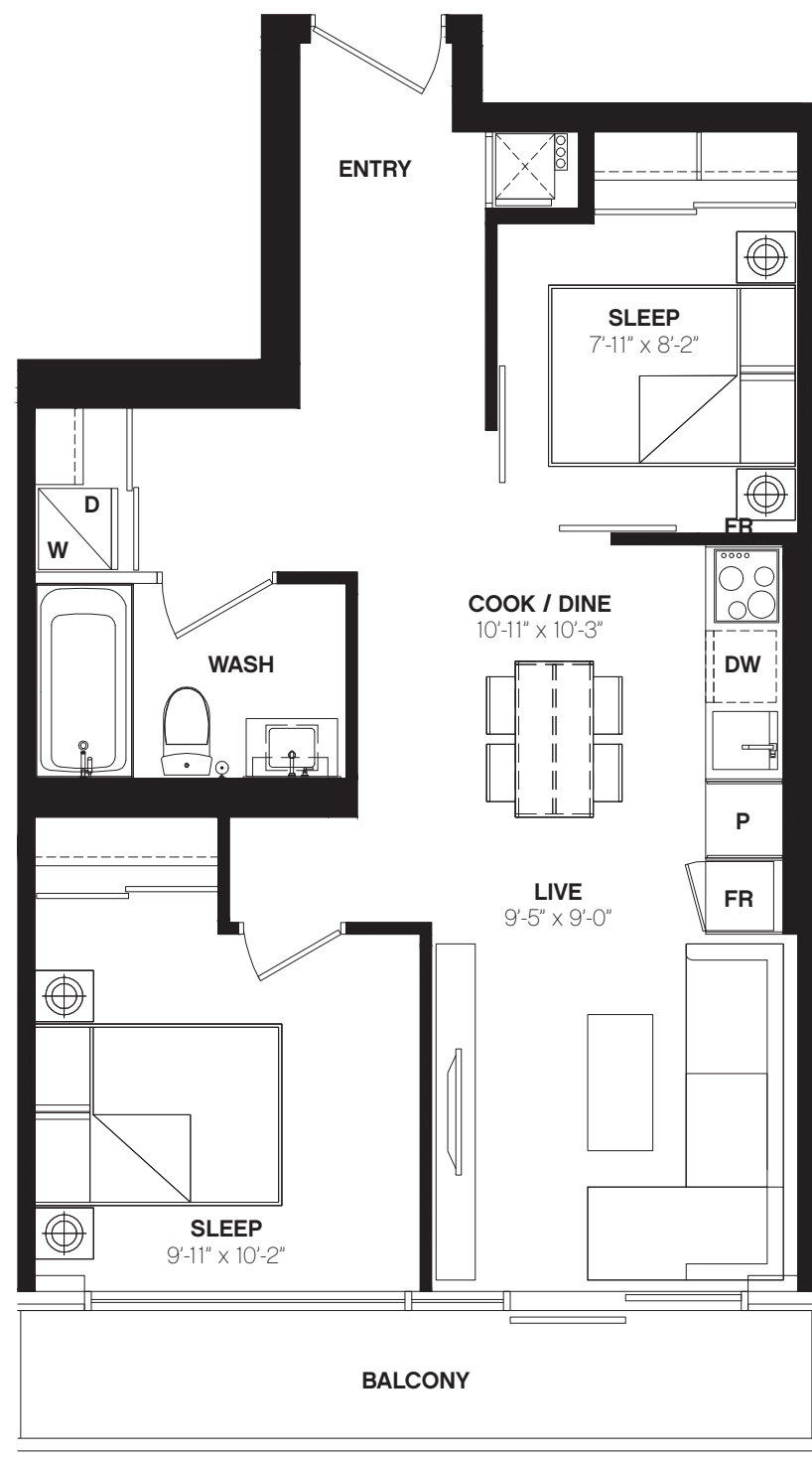
W608

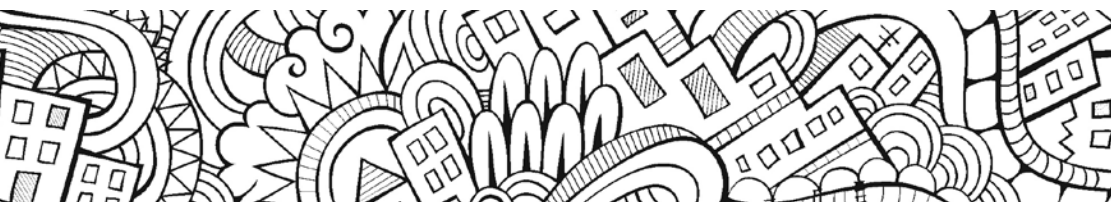
2 BED / 608 SQ. FT.



W645

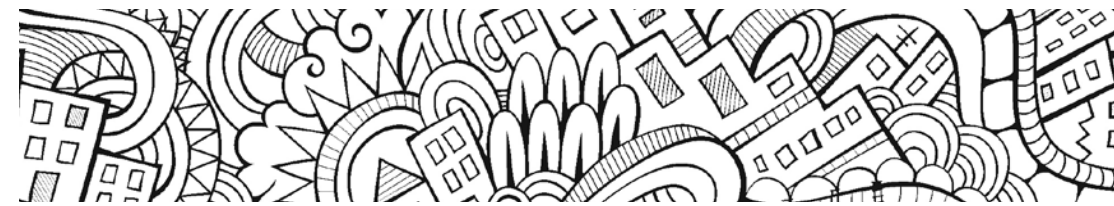
2 BED / 645 SQ. FT.





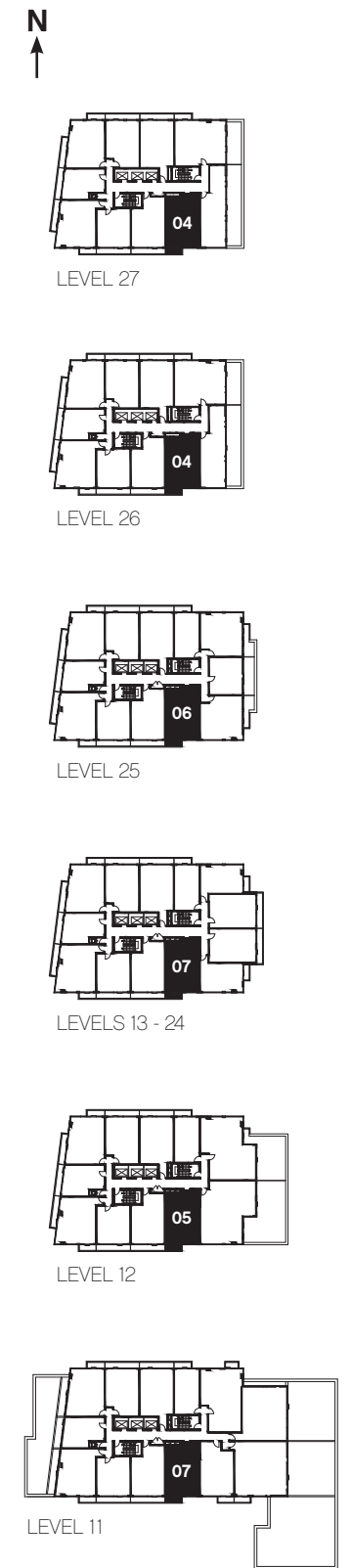
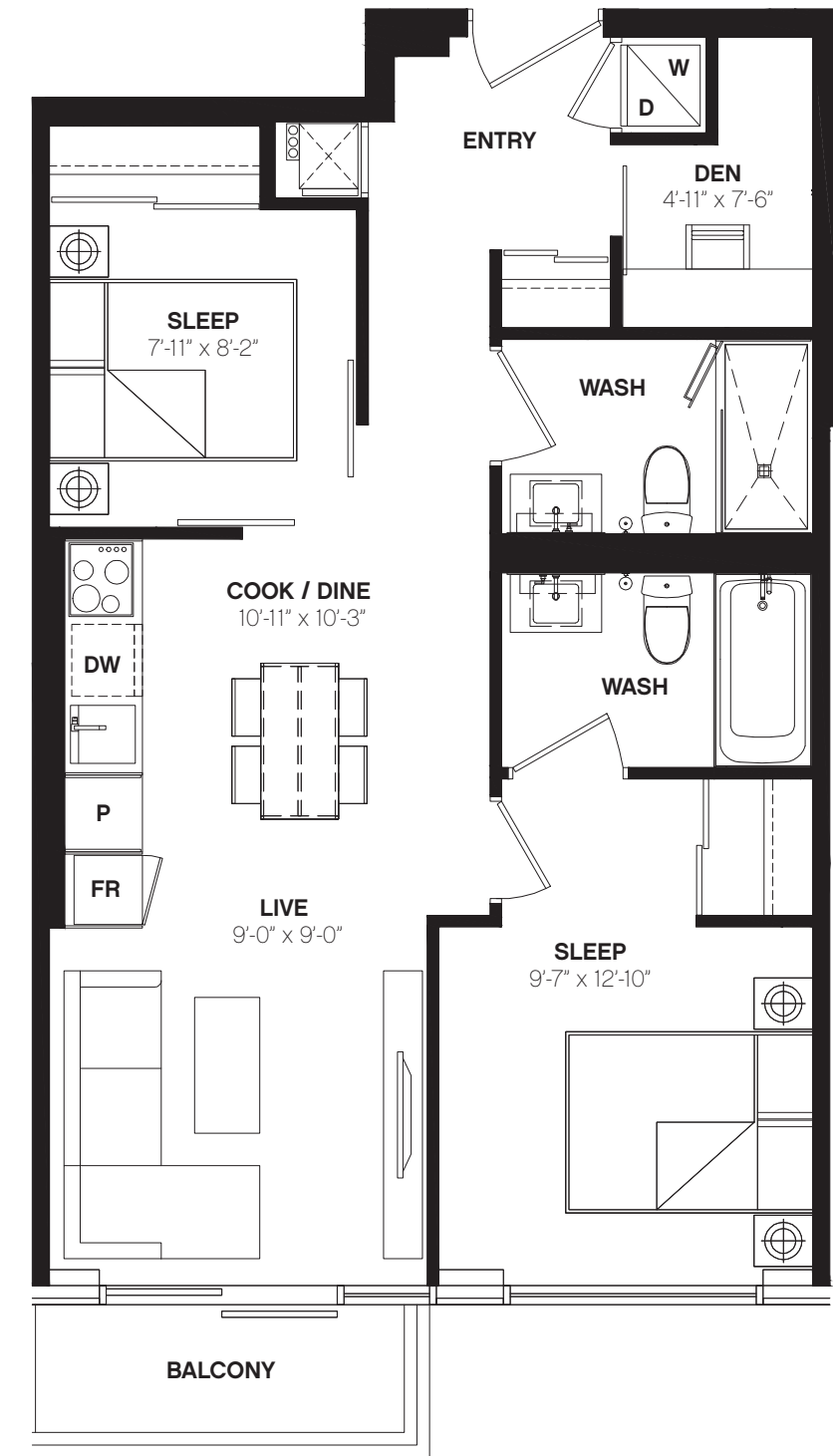
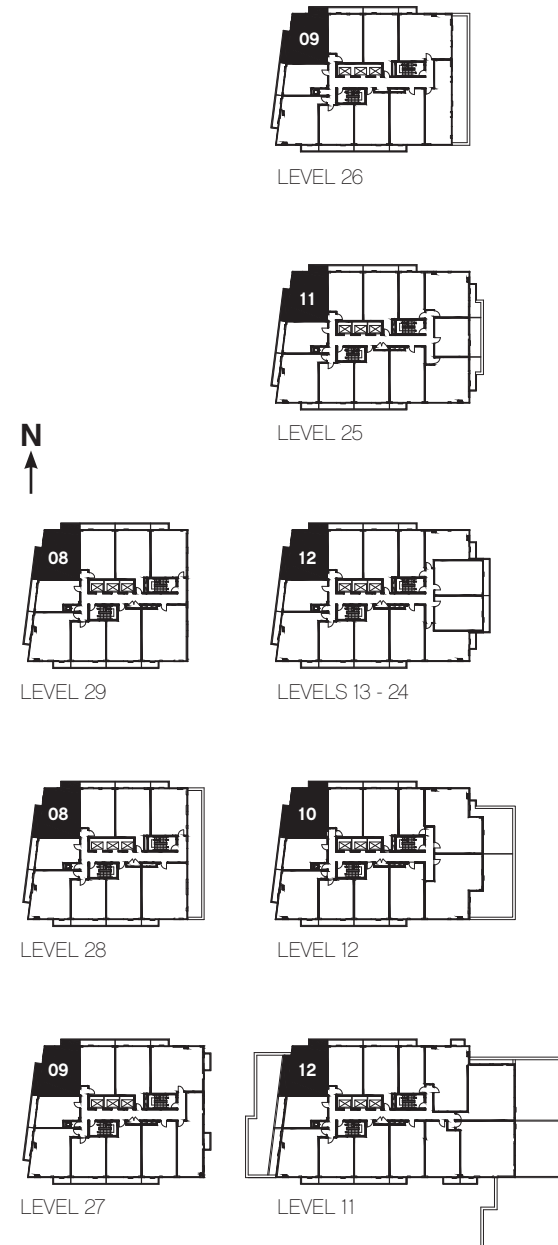
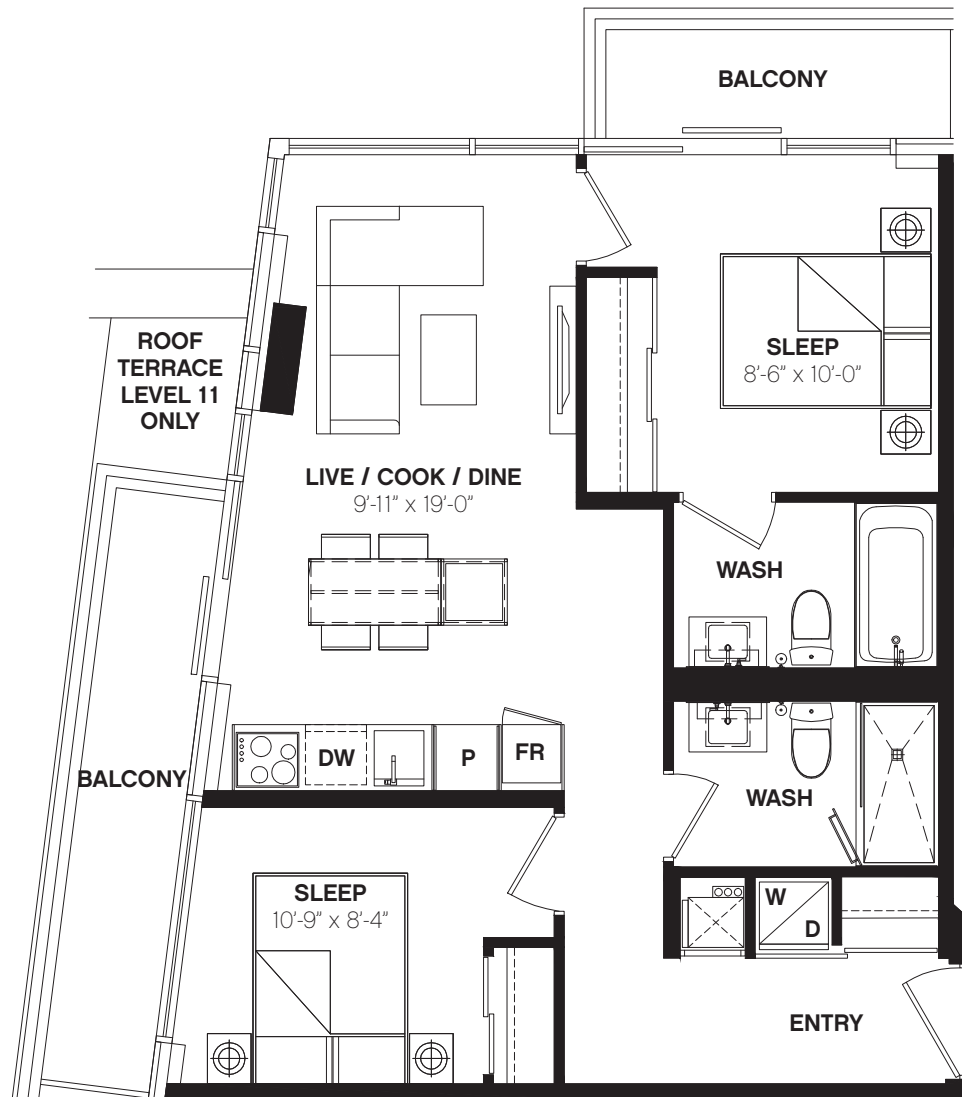
W653

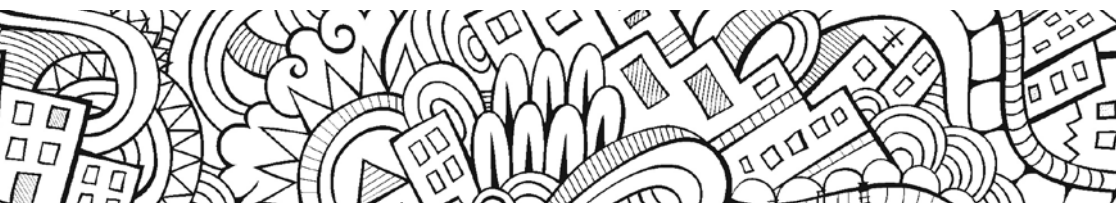
2 BED / 653 SQ. FT.



W669

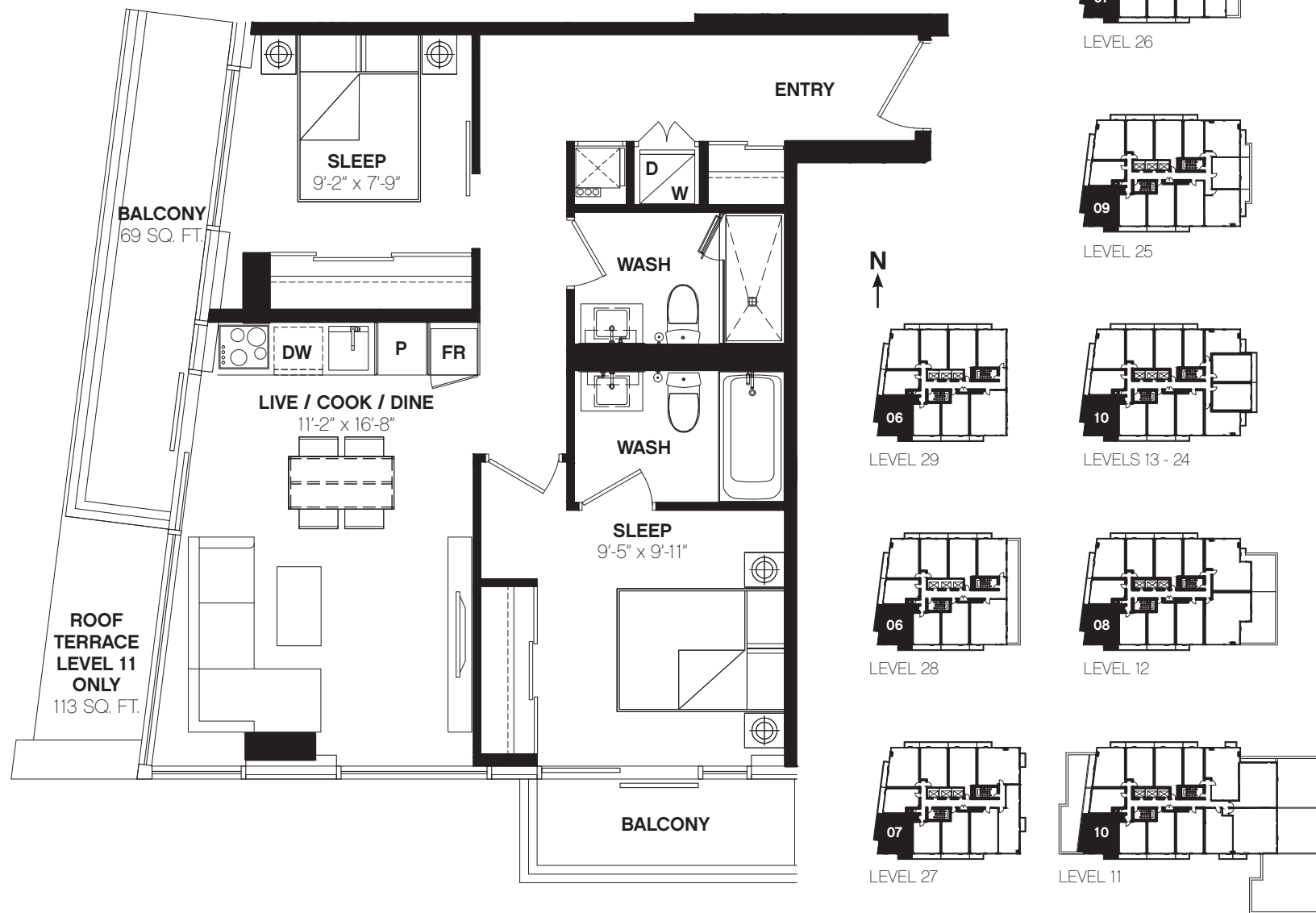
2 BED + DEN / 669 SQ. FT.





W697

2 BED / 697 SQ. FT.



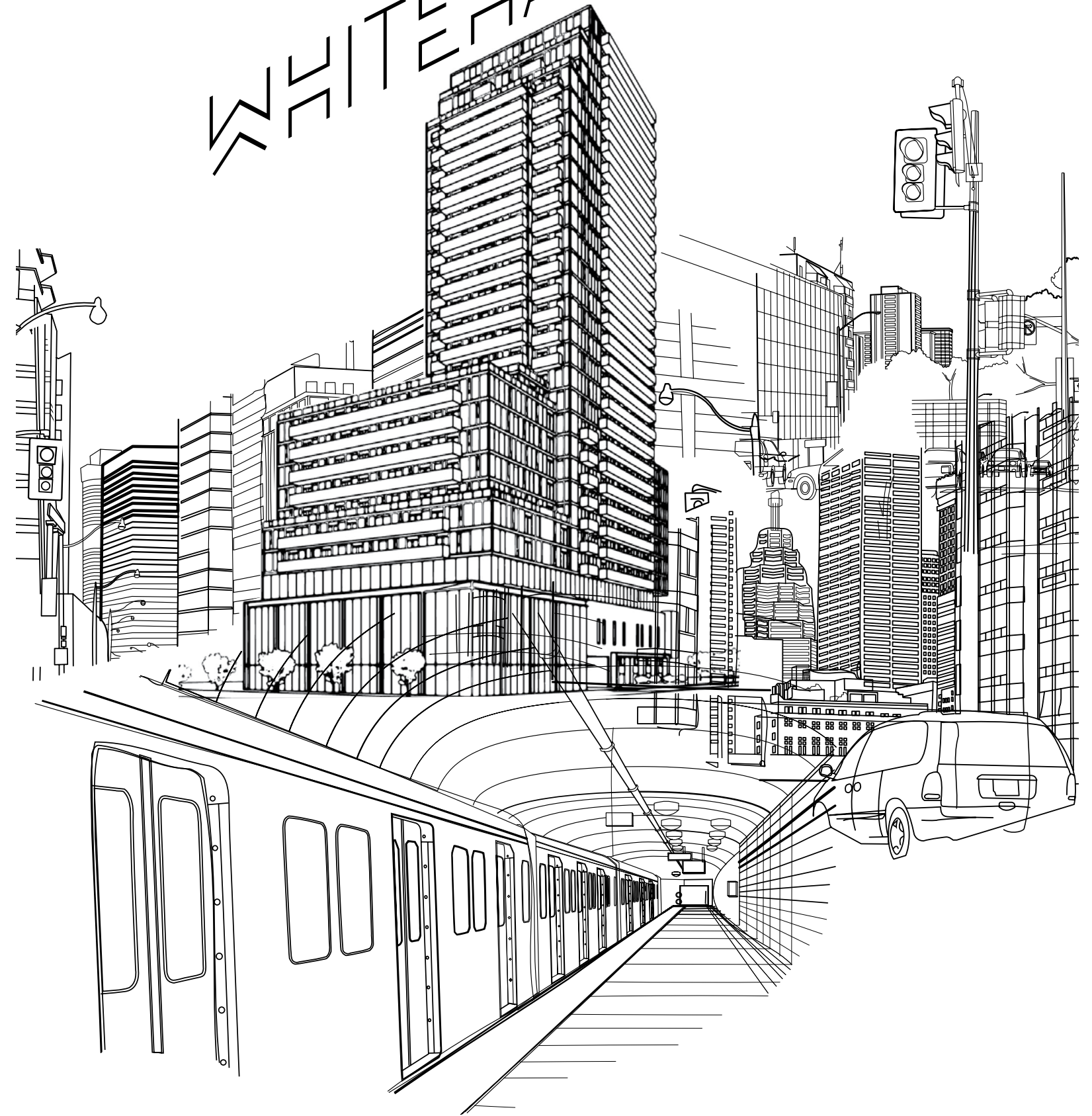
living between the lines
colouring book



WHITEHAUS

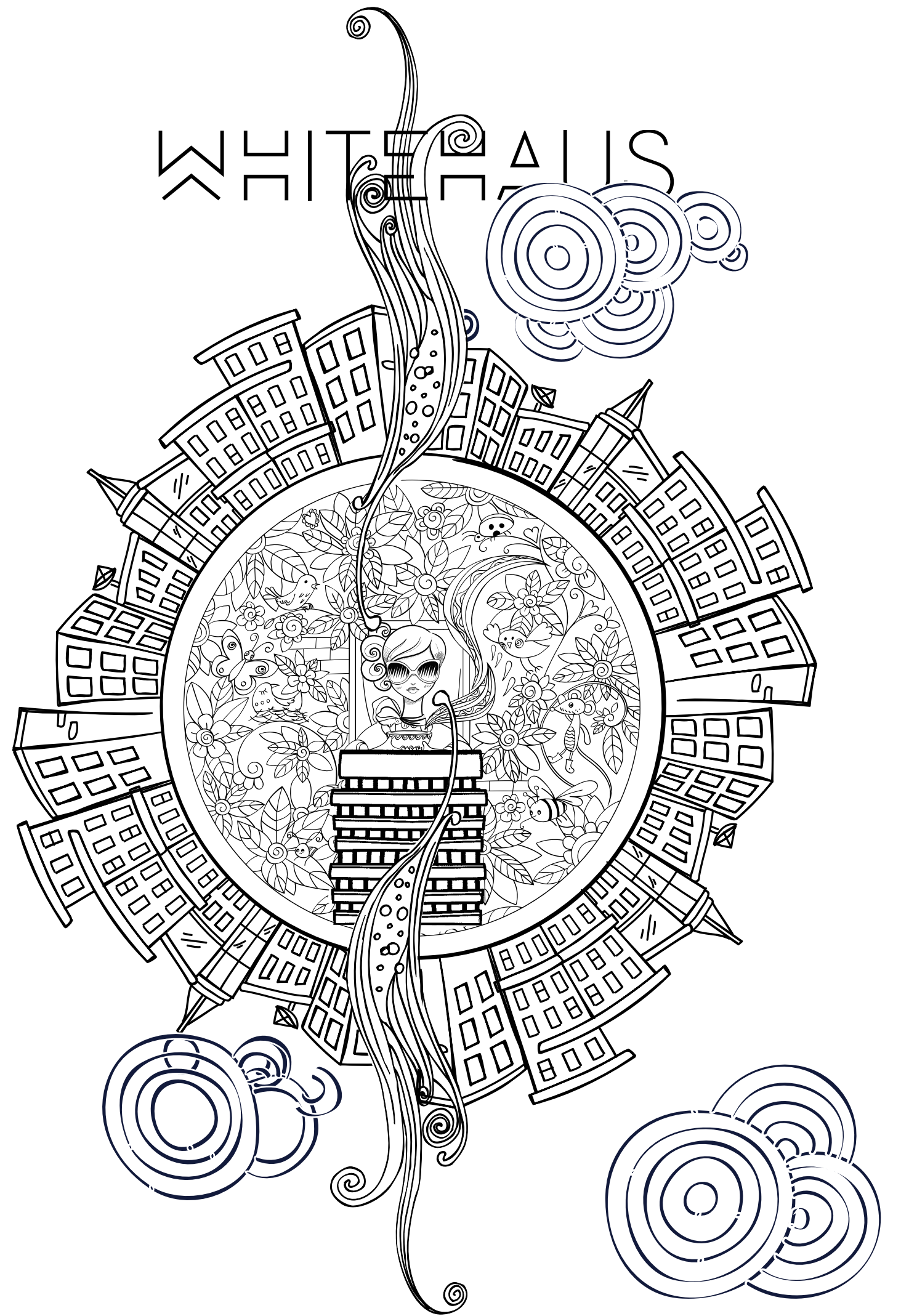


WHITEHAUS





WHITEHALLS





WHITEHAUS





WITTEHAUS



Woof!

doghaus

Au yoo!

err

?

REX



hola

HALLO

MARHABA

HELLO

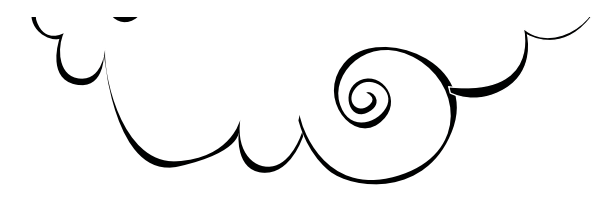
Ciao

BUON GIORNO

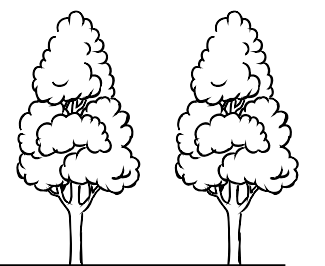
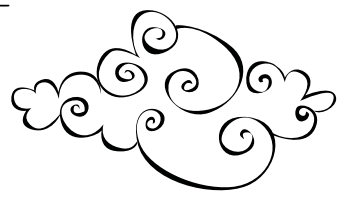
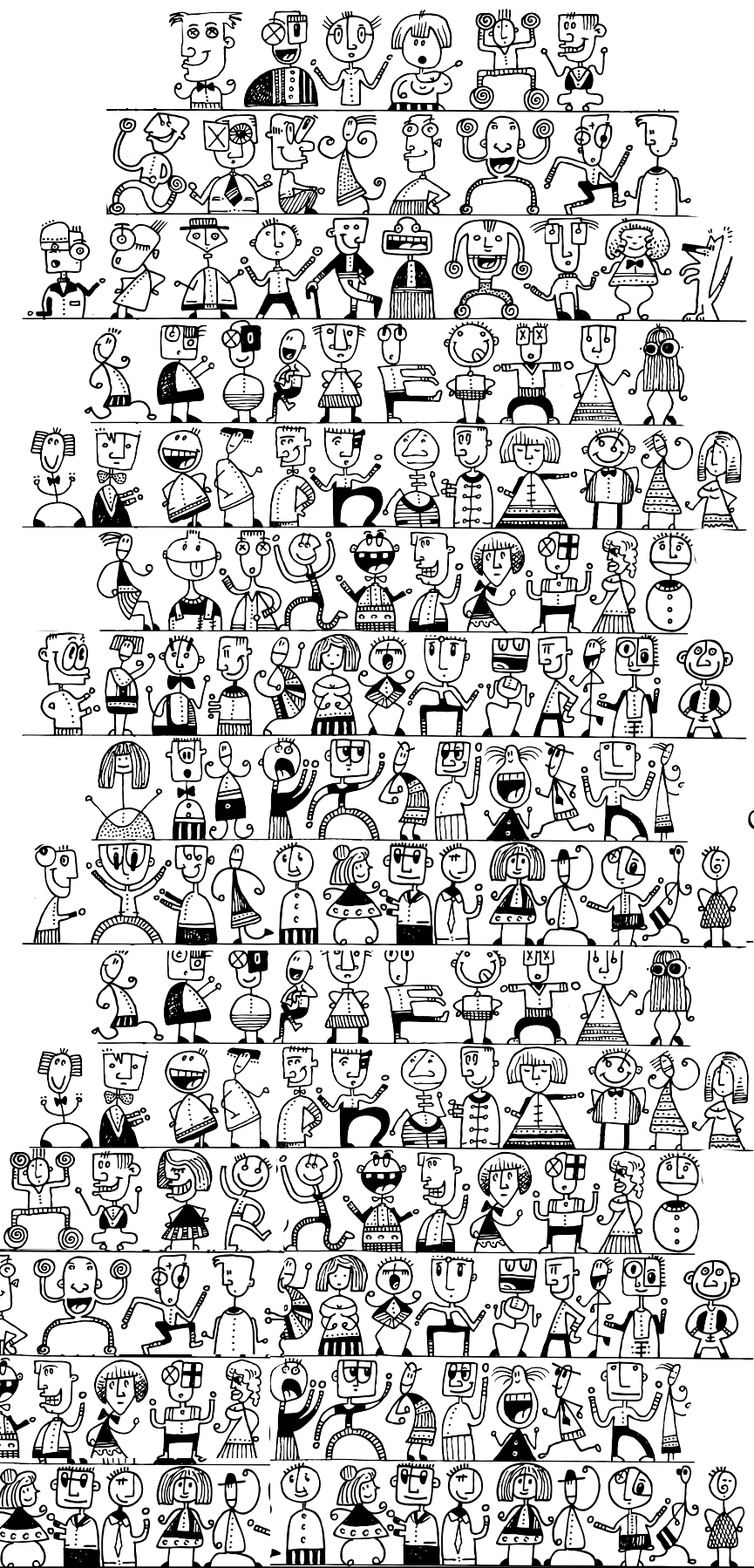
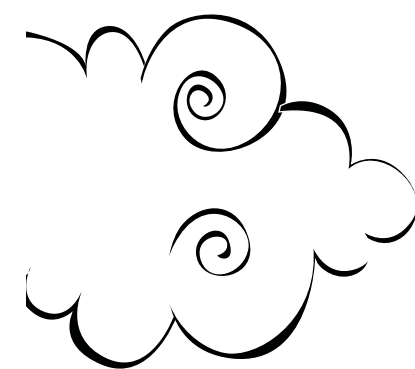
WHITEHAUS

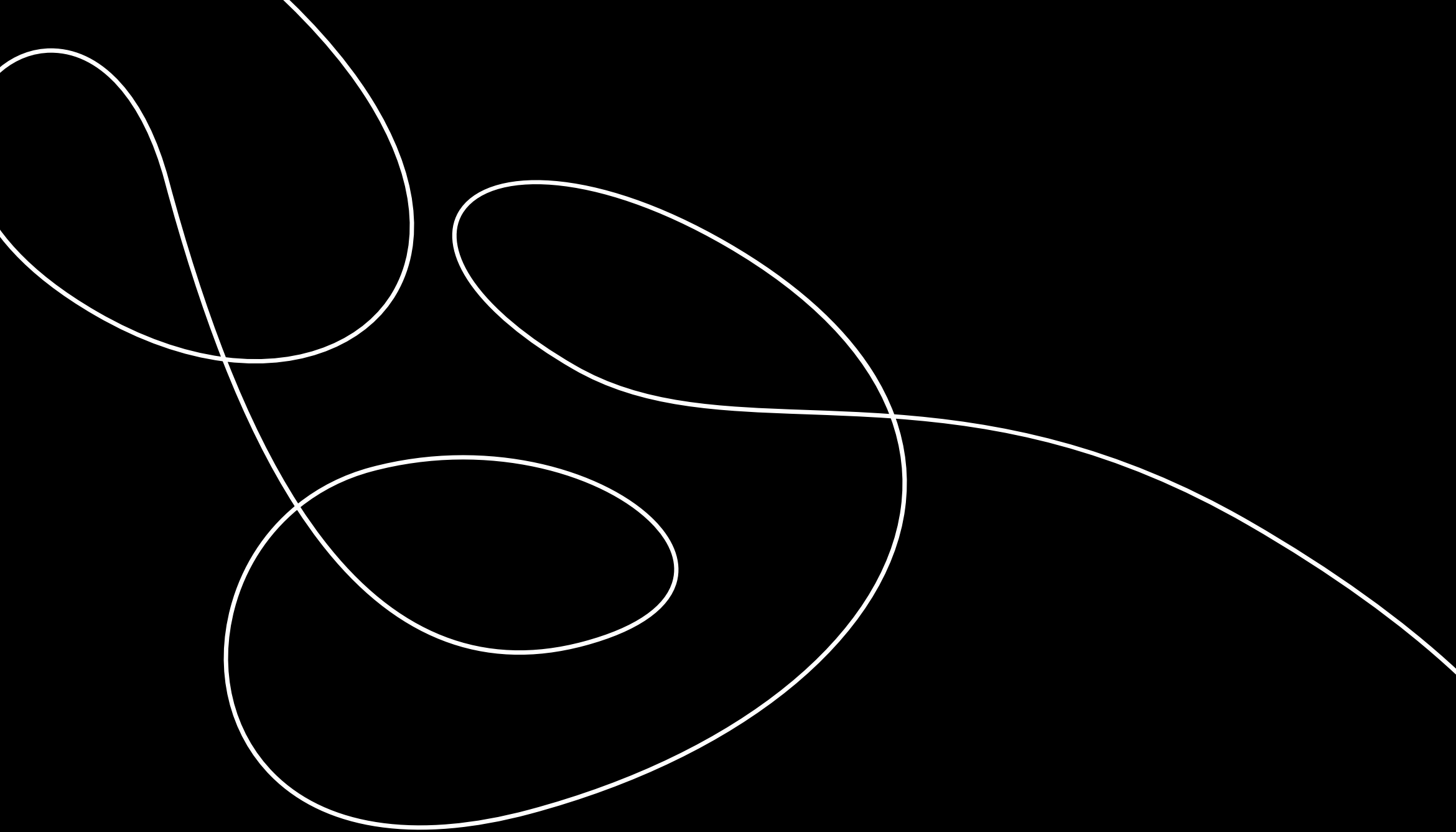
Ni Hao





WHITEHAUS





WHITEHAUS
CONDOMINIUMS



YongeSt

BO

LAZA

APERITIVO

WHITEHAUS

CAFE

ECCHIA

Eglin

grano

TAXI